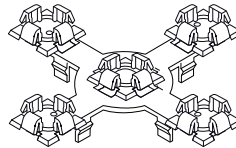
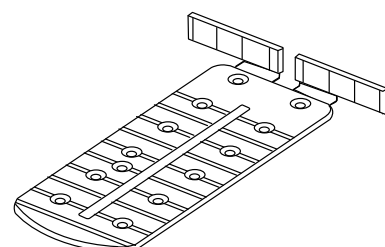
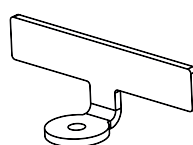
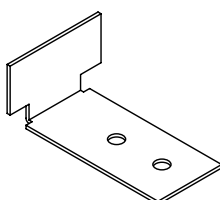
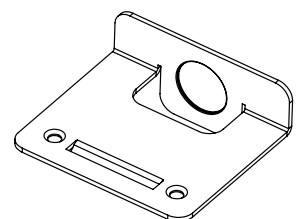
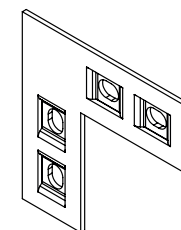
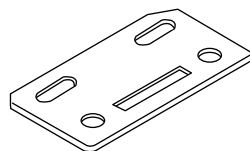
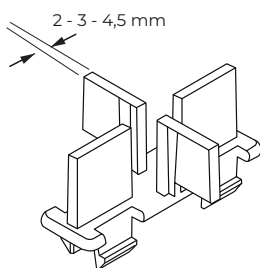
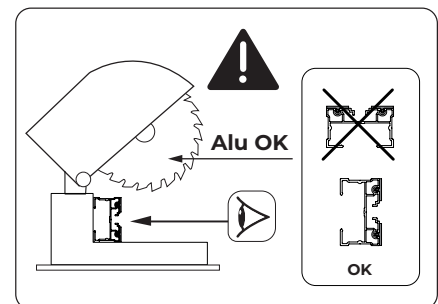
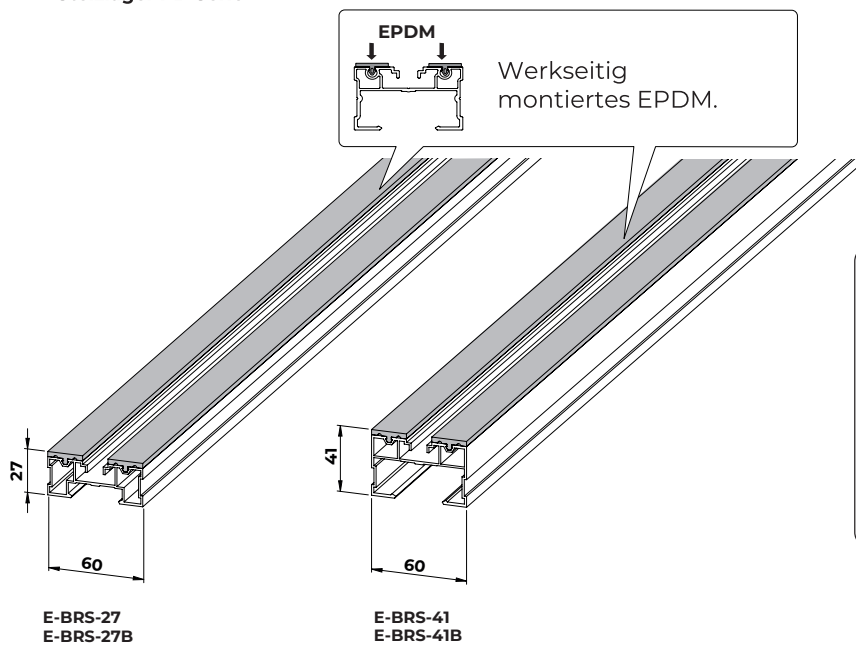


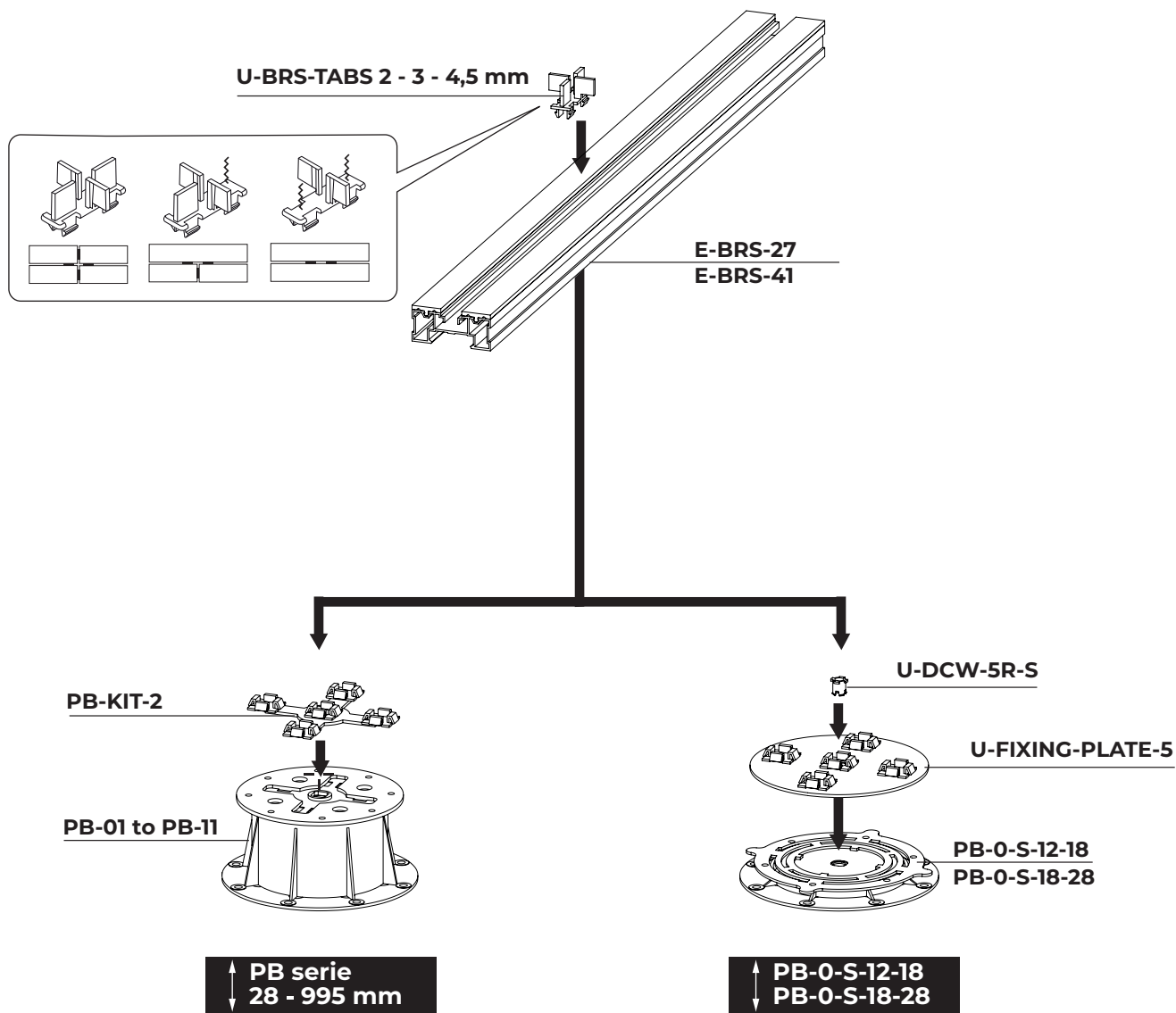
Stelzlager PB-Serie



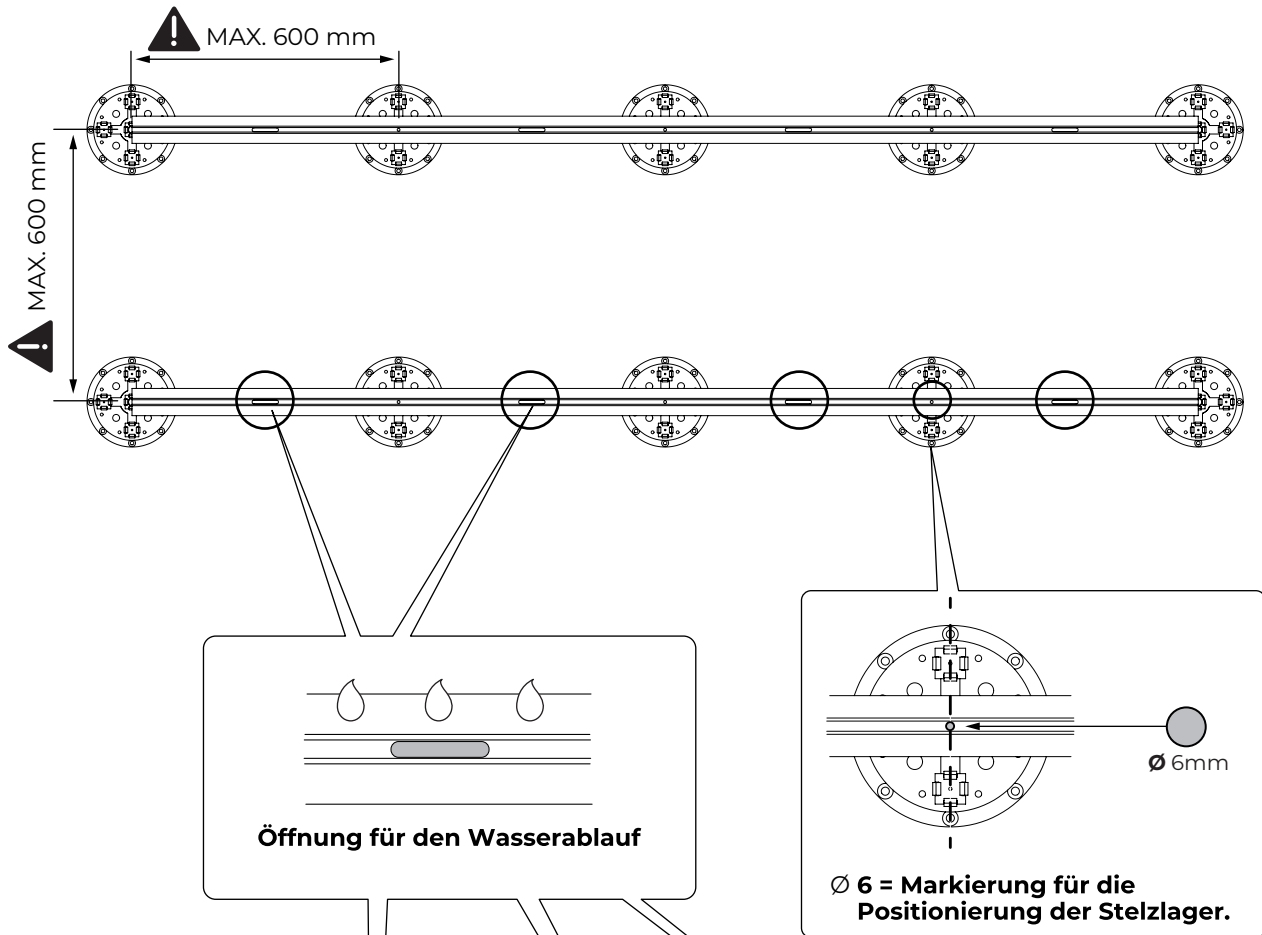
PB-KIT-2

U-BRS-VIS

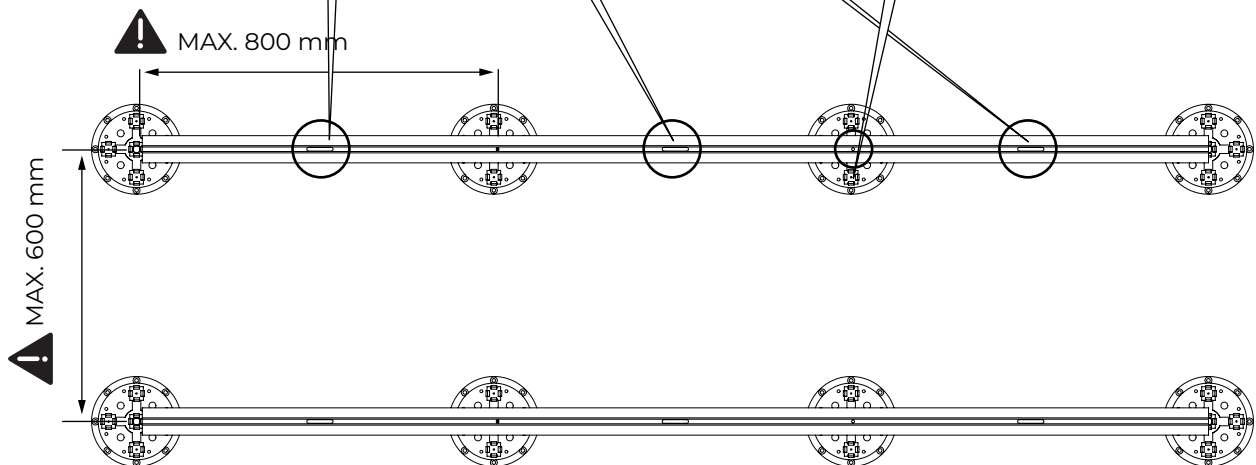




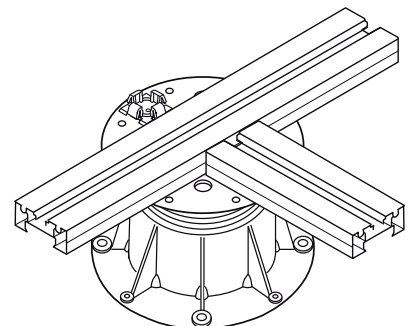
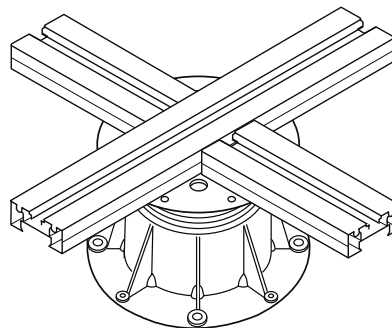
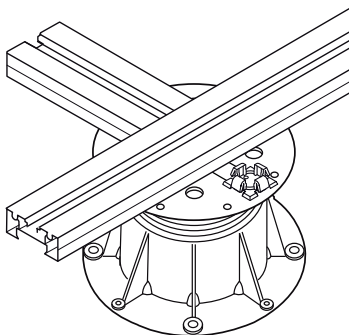
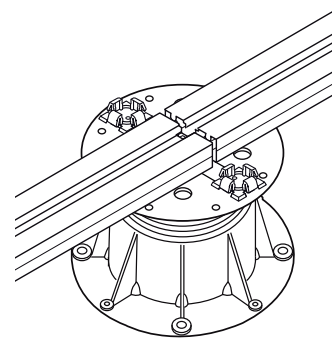
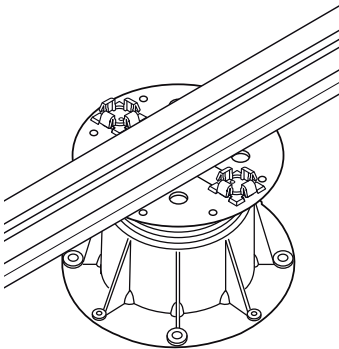
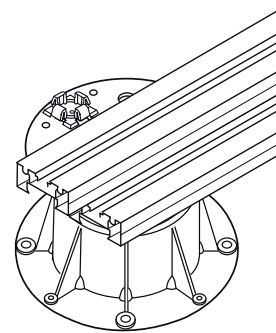
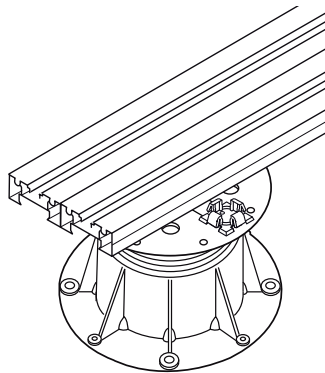
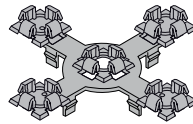
E-BRS-27



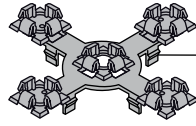
E-BRS-41



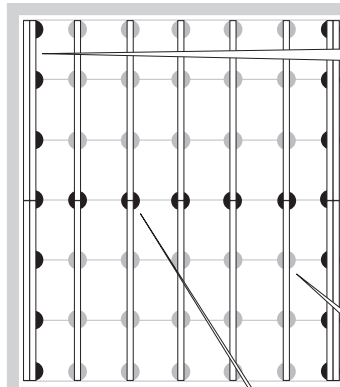
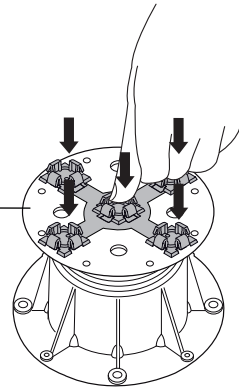
PB-KIT-2



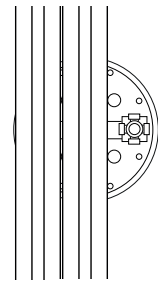
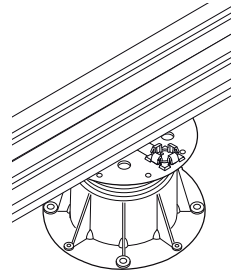
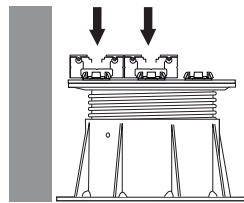
1



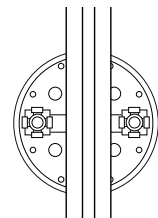
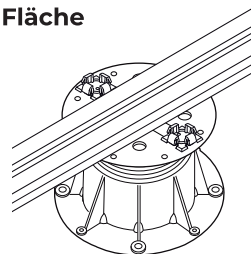
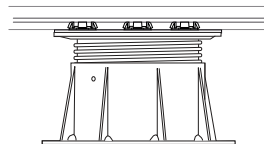
PB-KIT-2



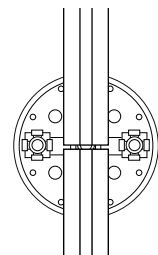
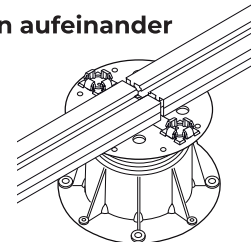
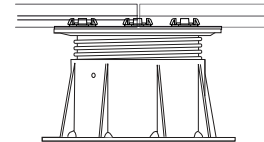
Schienen am Rand



Schienen verlegt in der Fläche

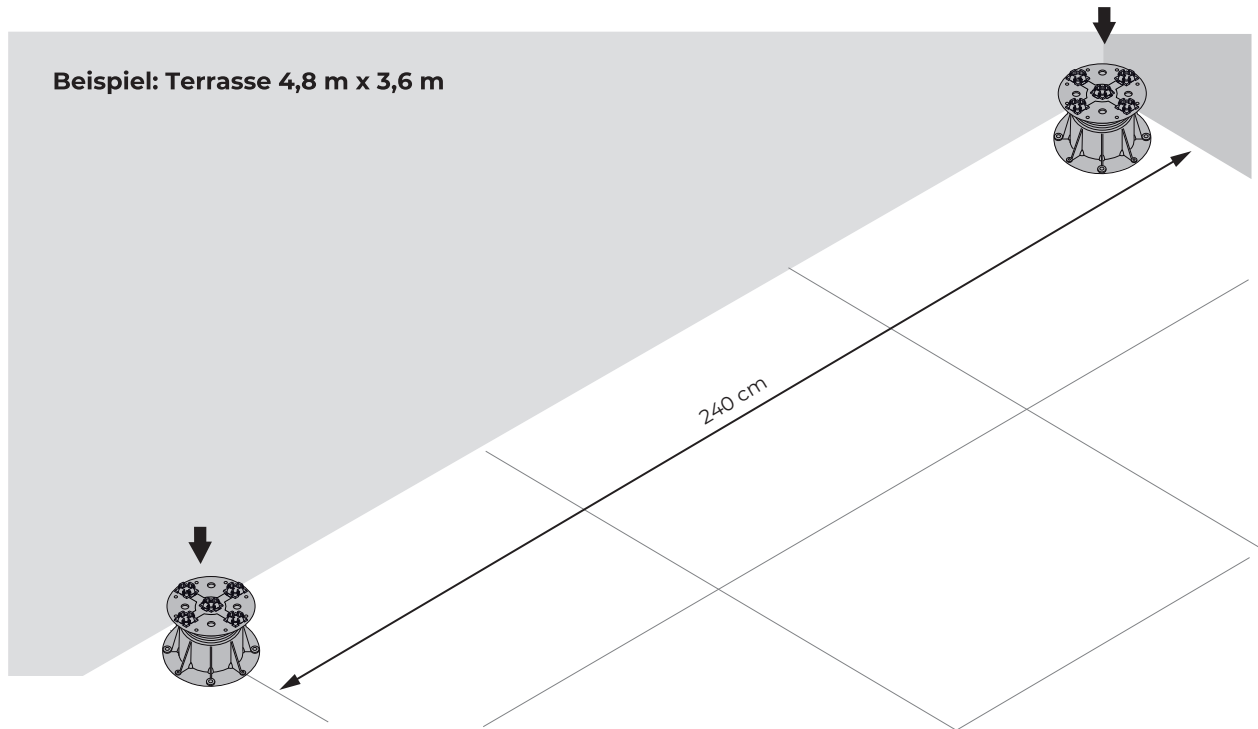


2 Schienenenden treffen aufeinander

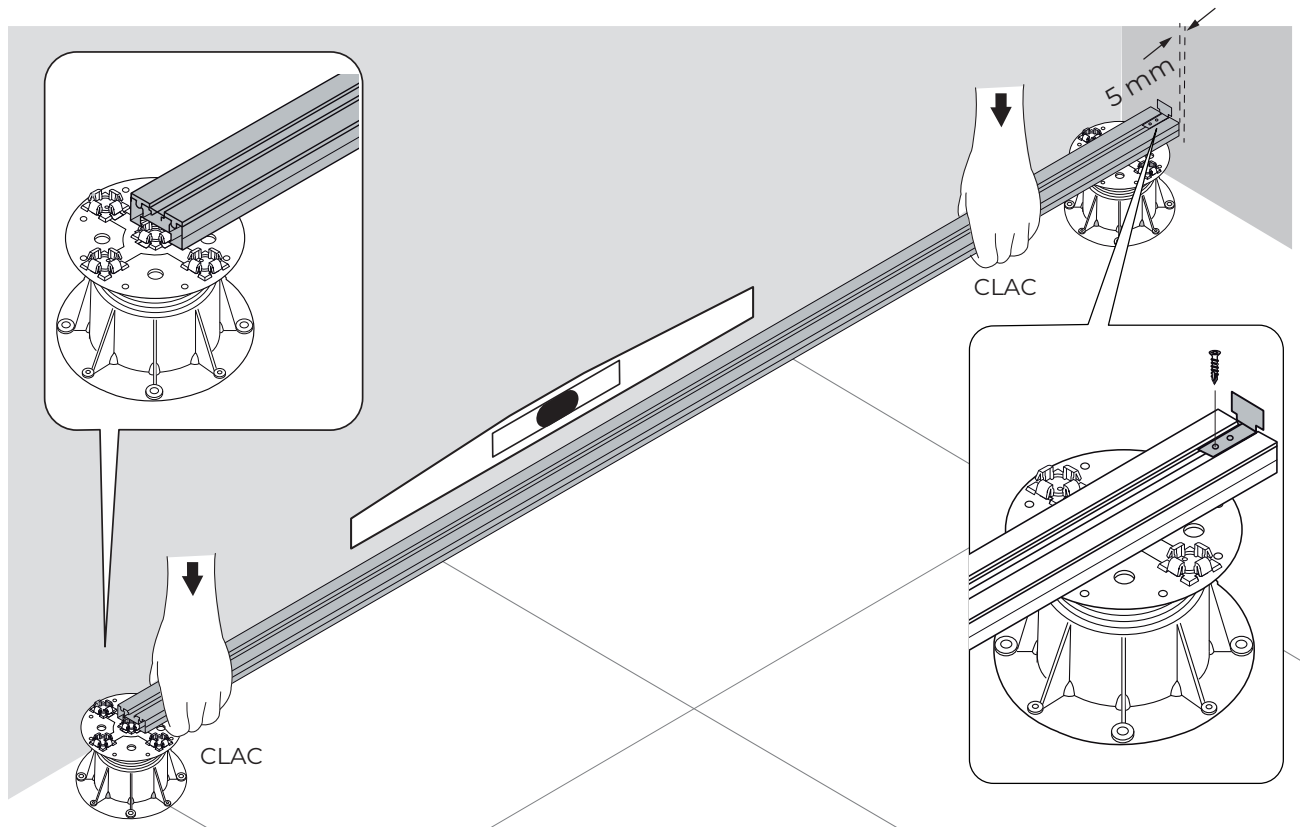


2

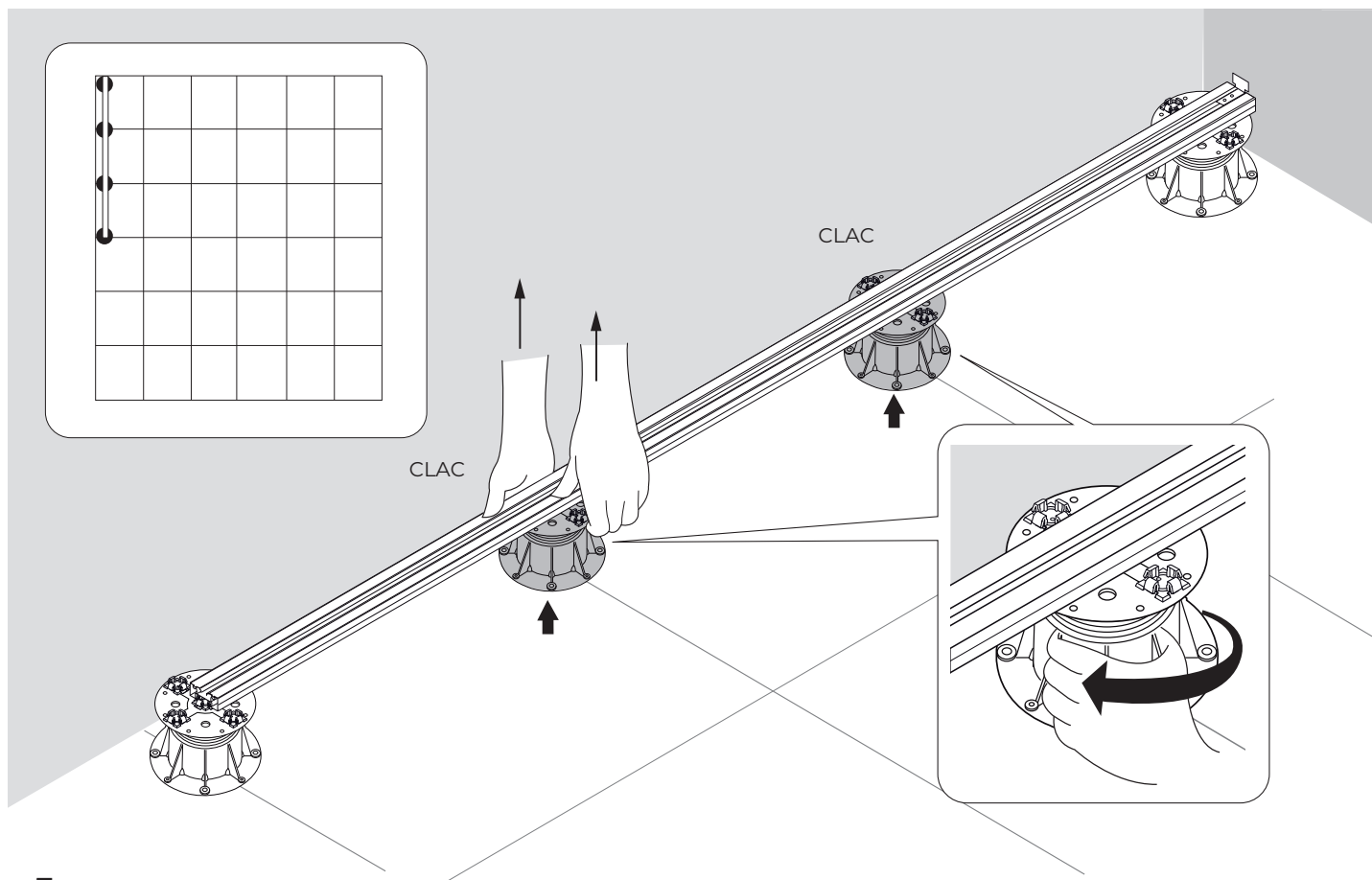
Beispiel: Terrasse 4,8 m x 3,6 m



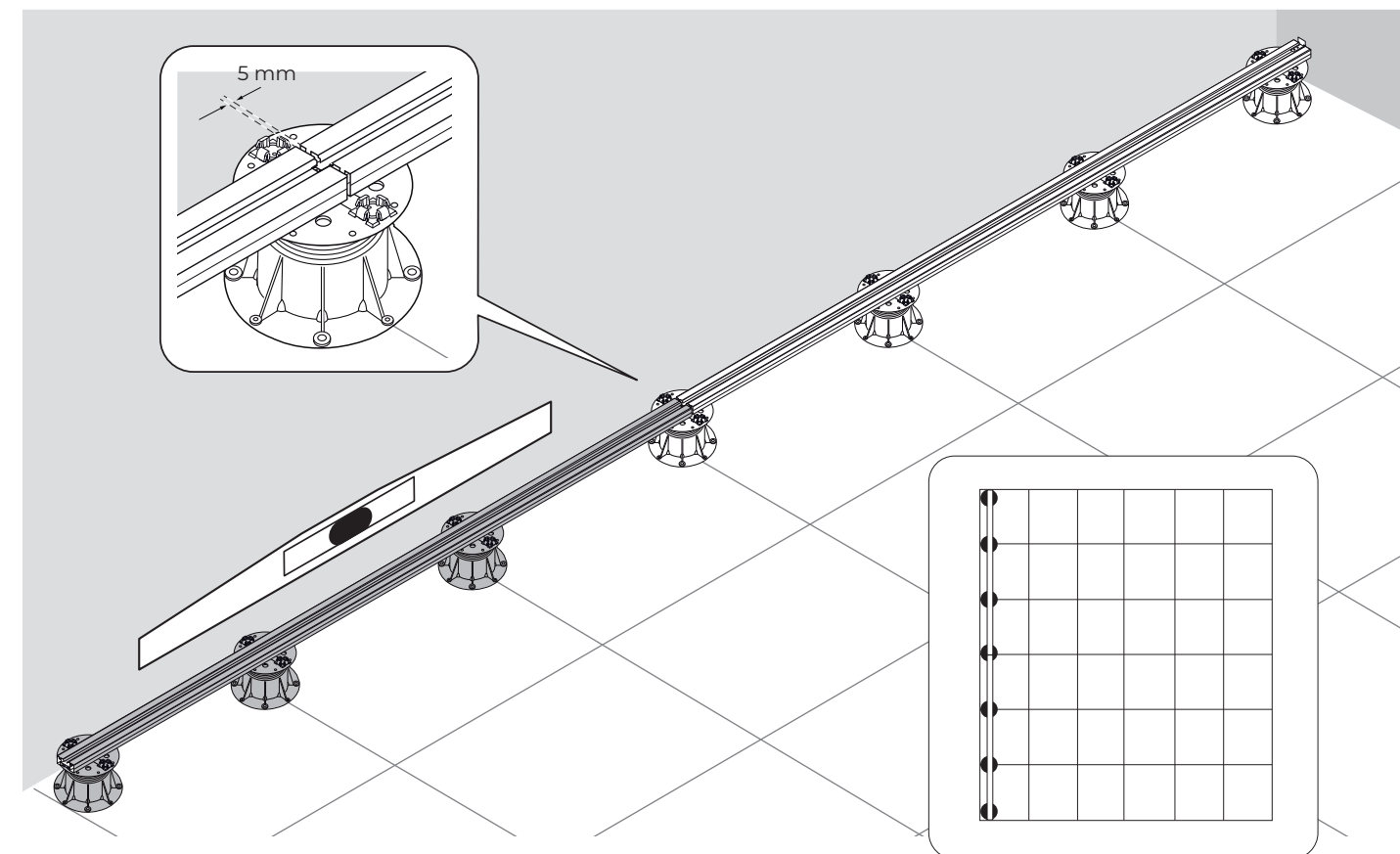
3



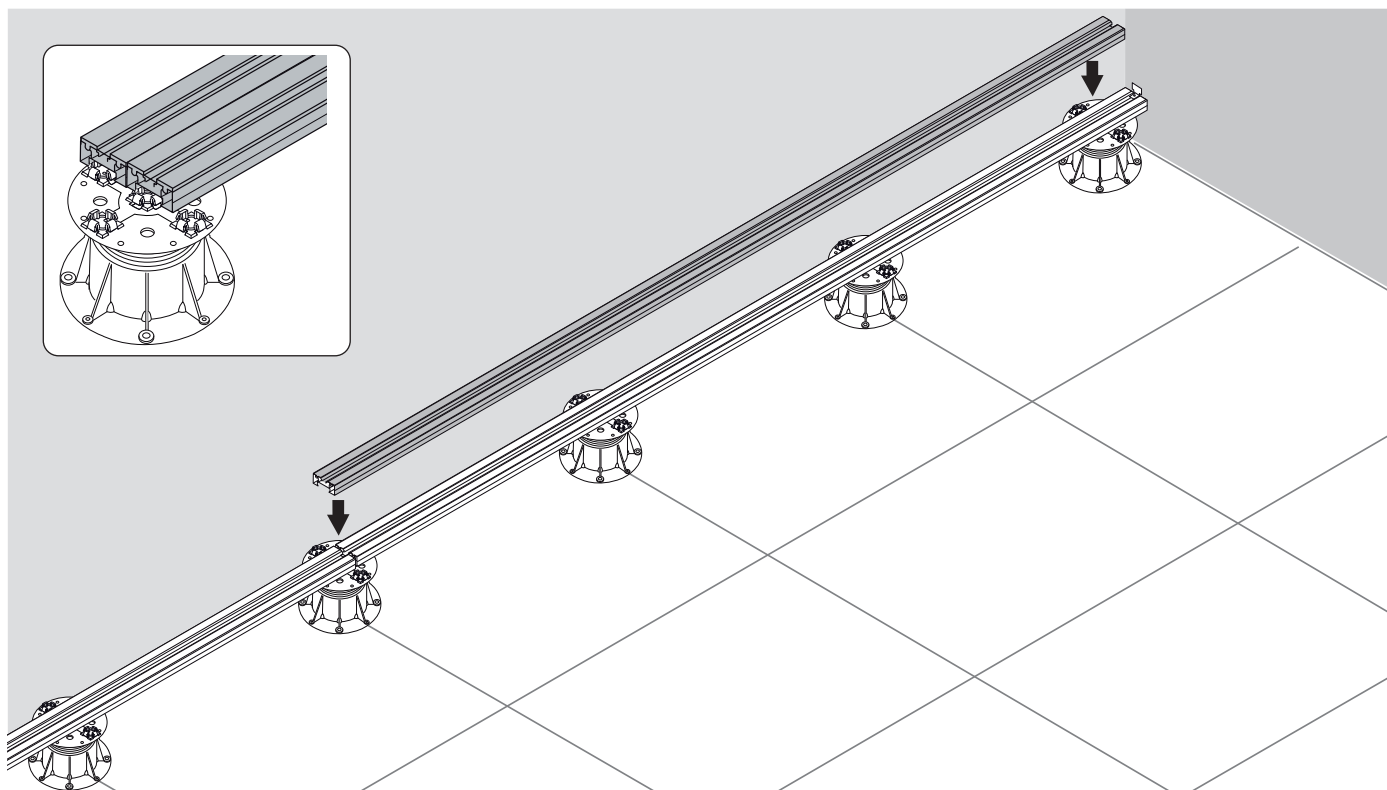
4



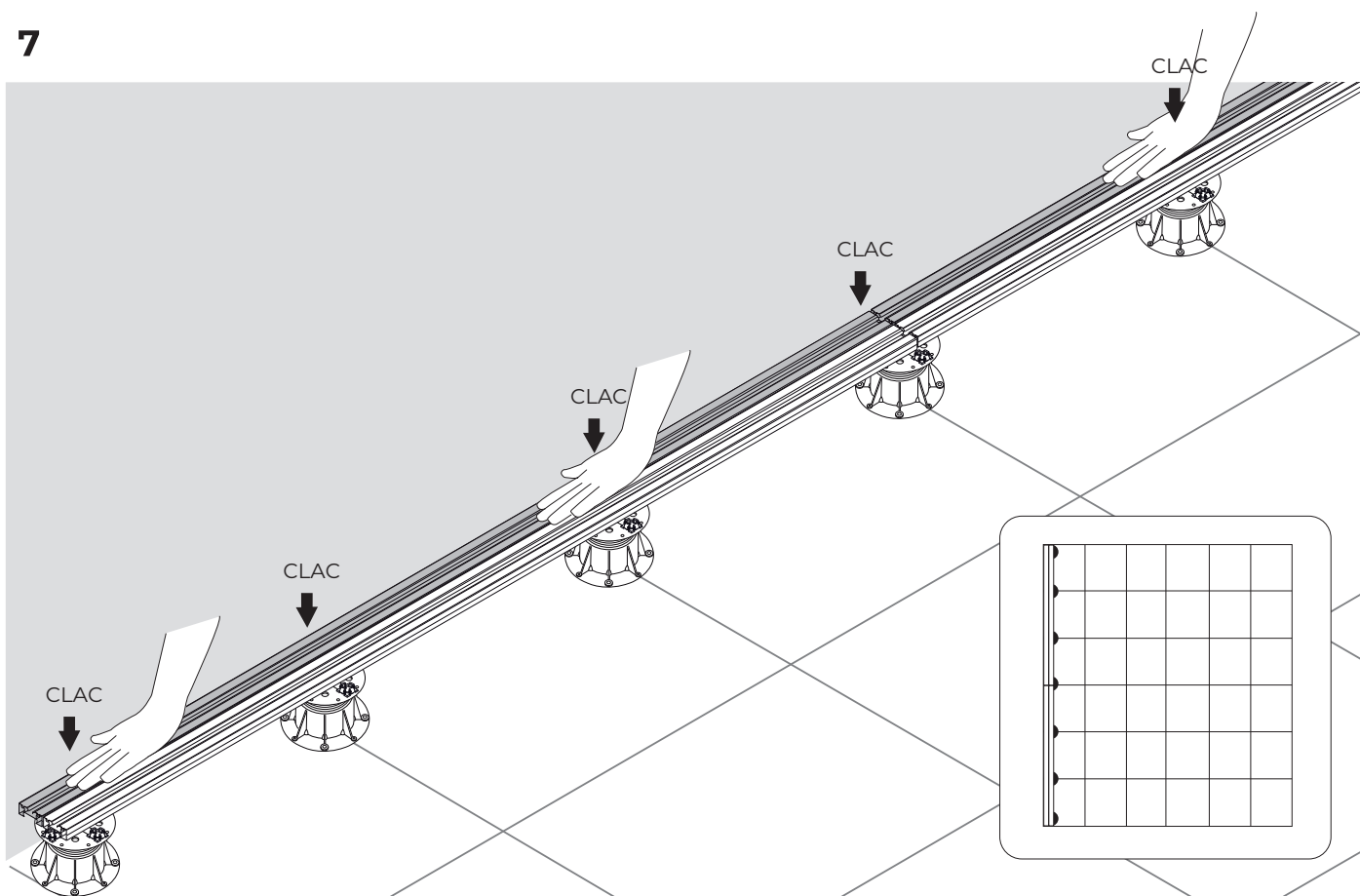
5



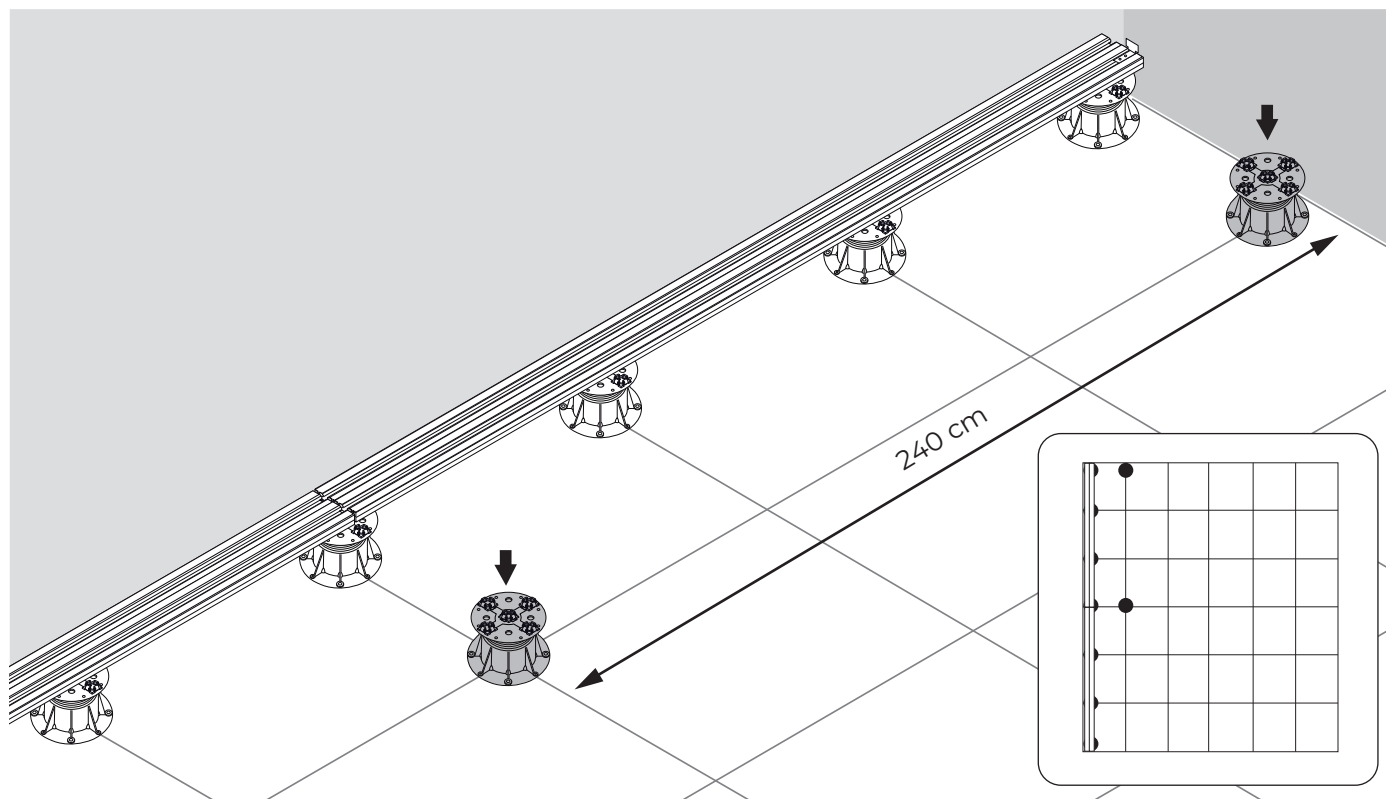
6 2 Schienen für die Verlegung am Rand



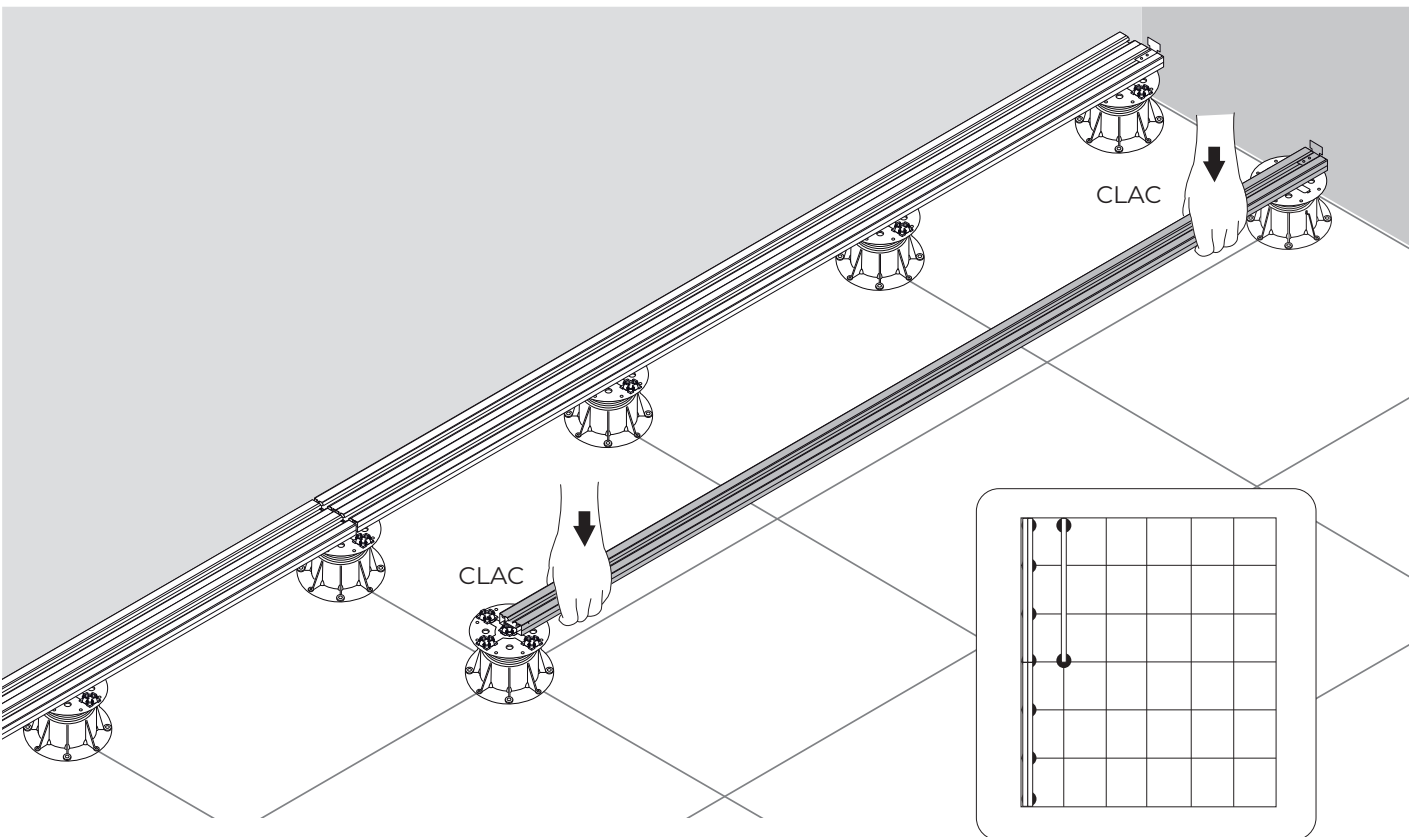
7



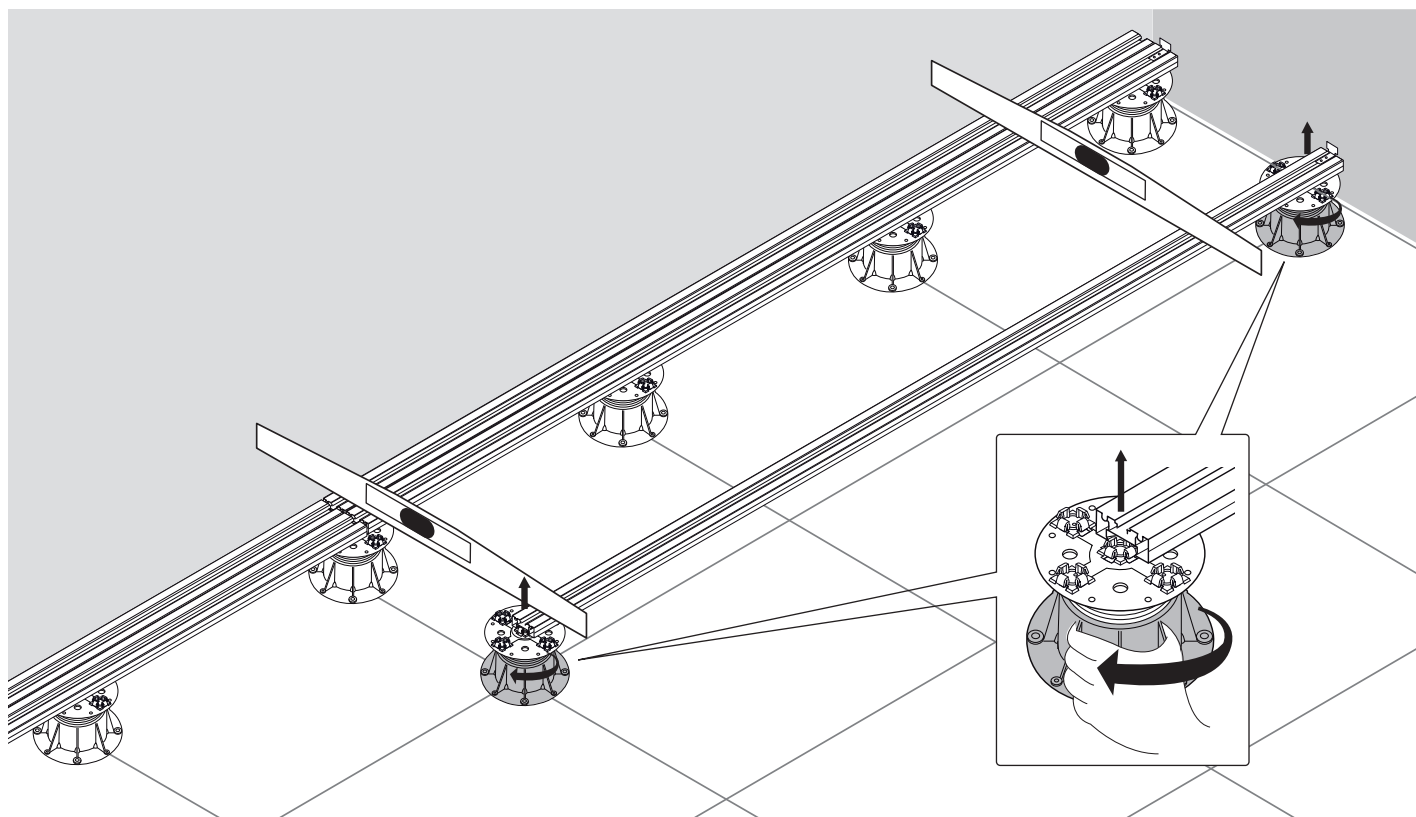
8



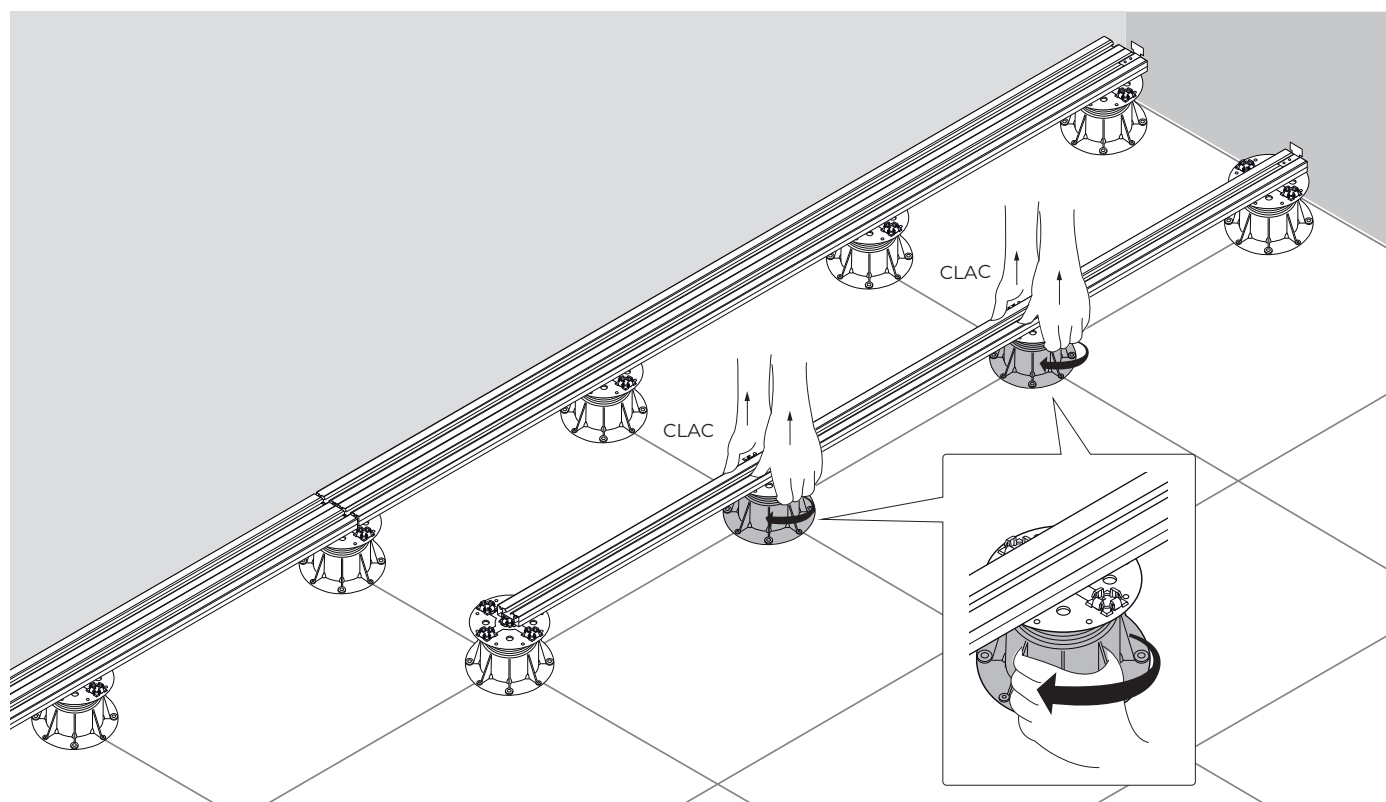
9



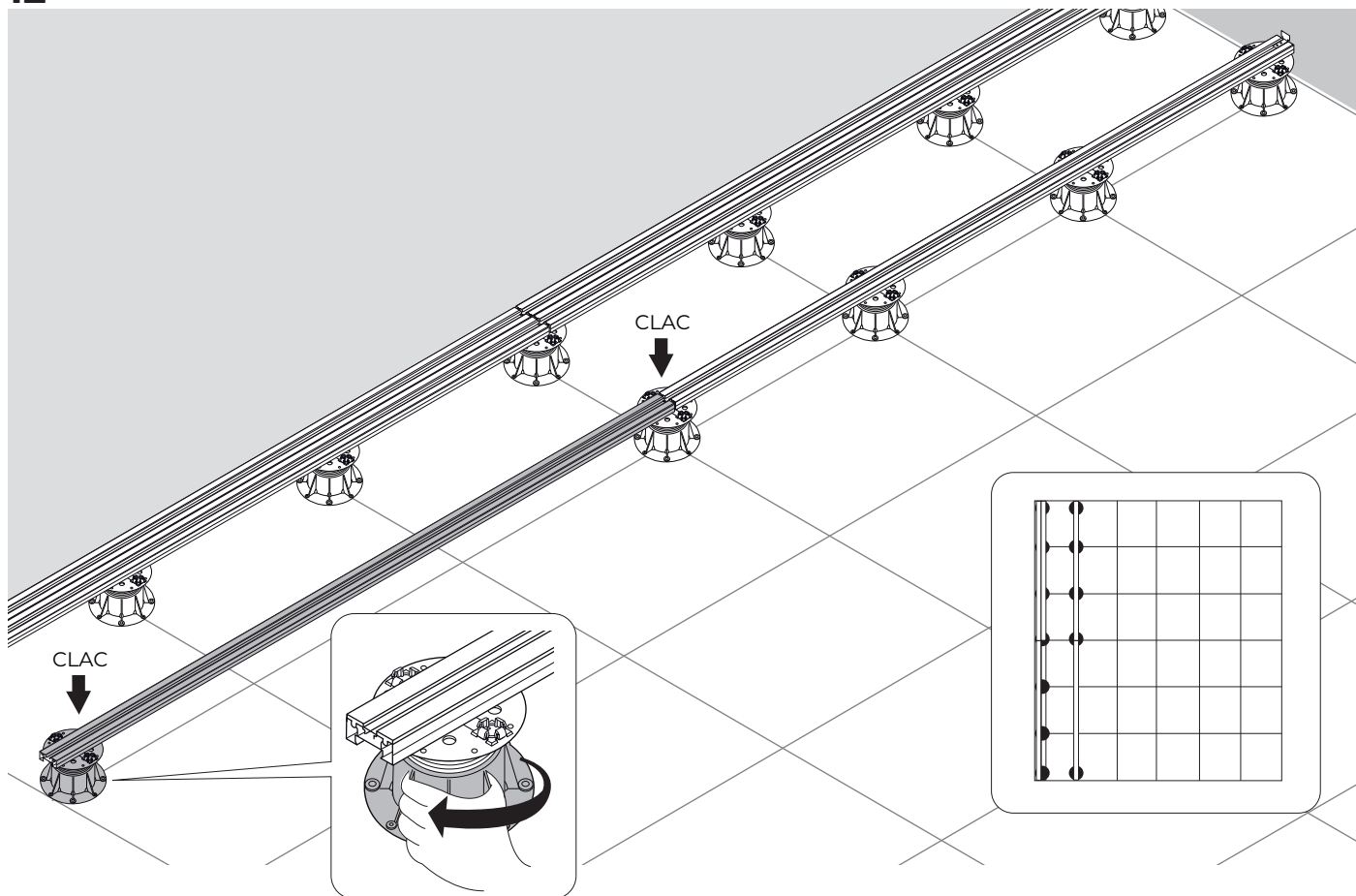
10



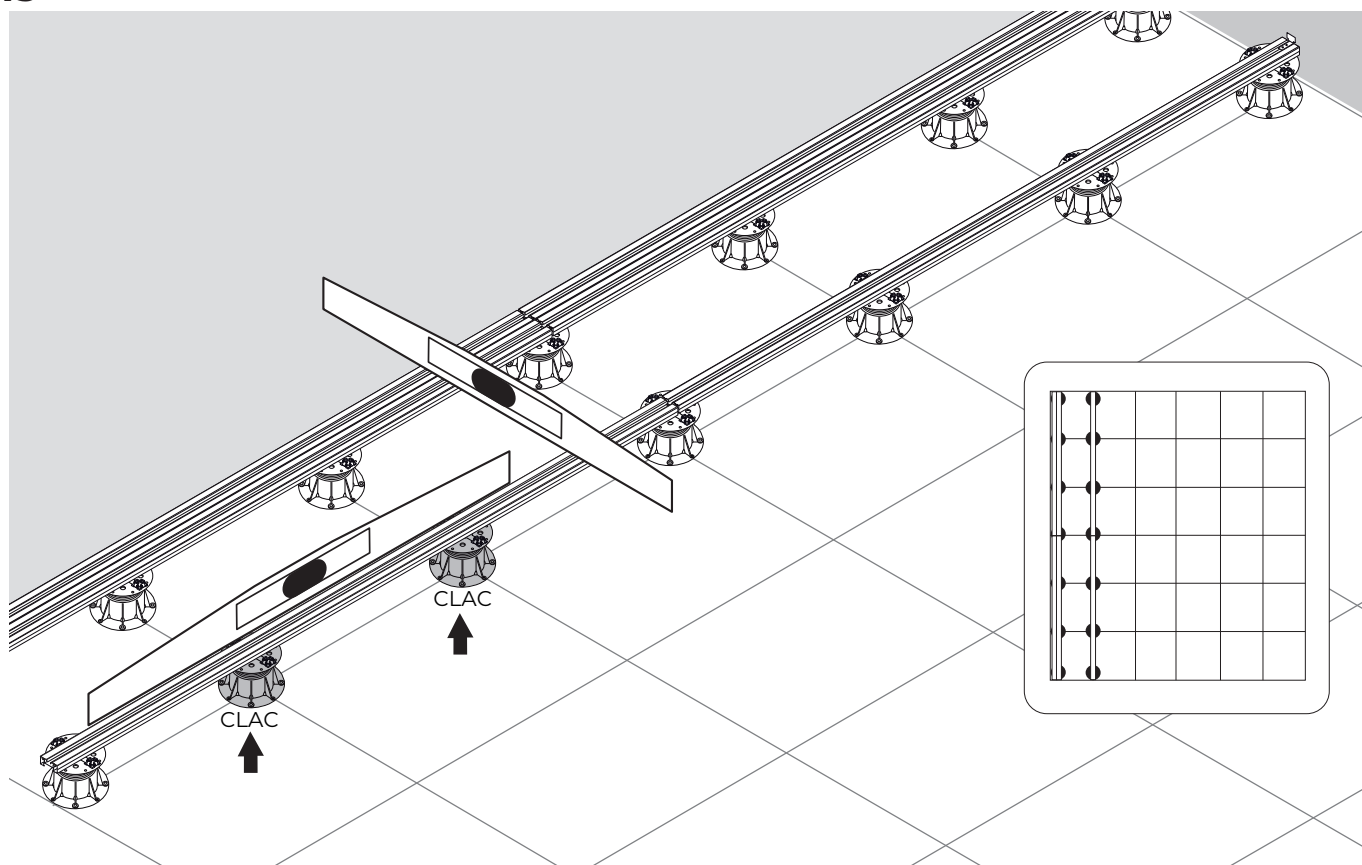
11



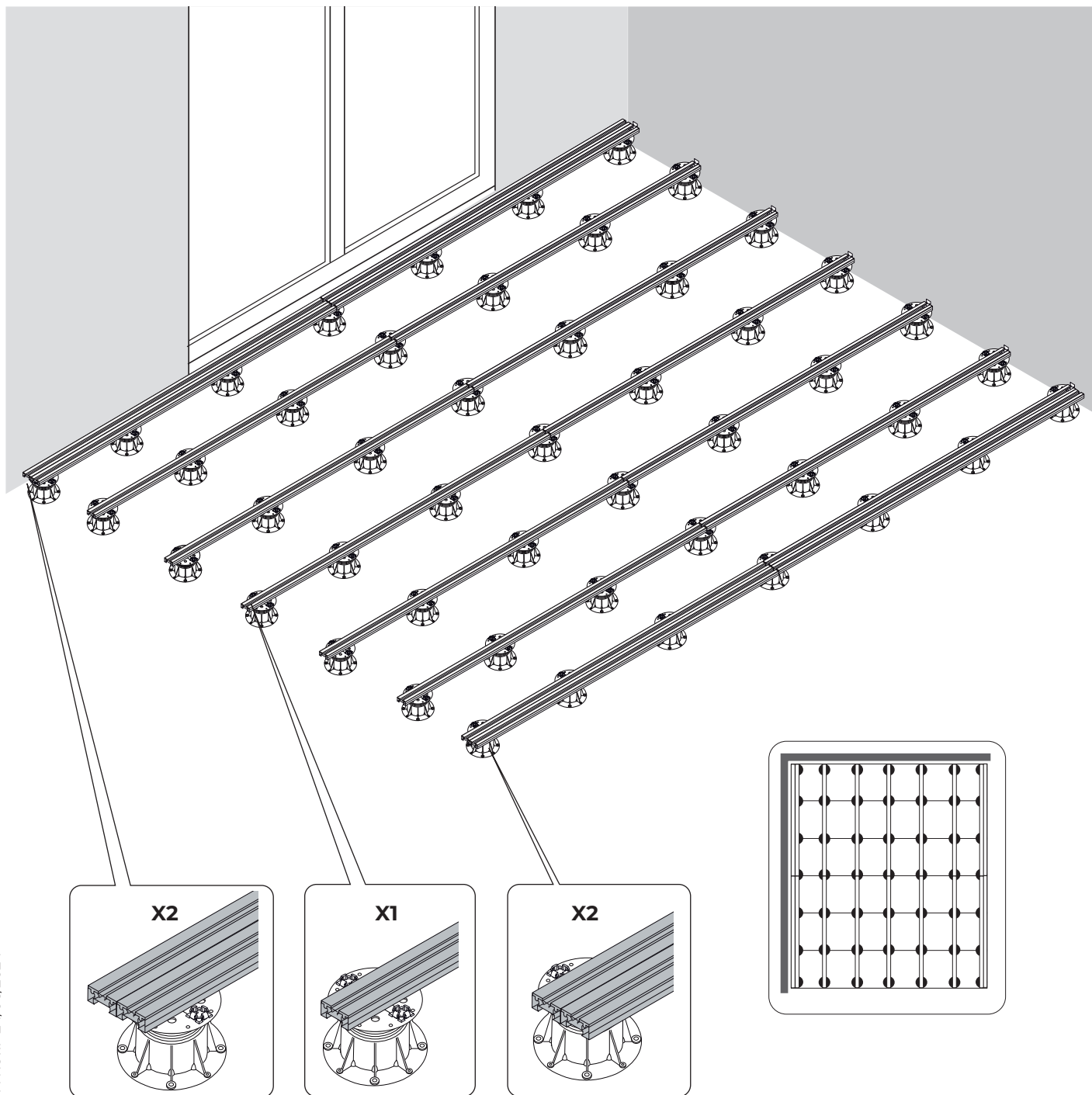
12



13



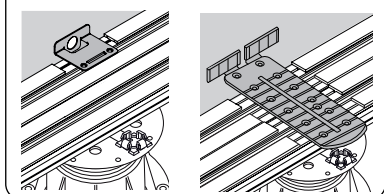
14



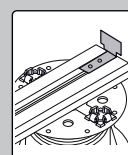
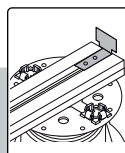
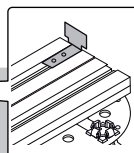
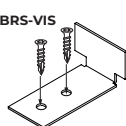
2 Schienen am Rand der verlegten Fläche.

15

E-BRS-STOP ODER U-WALL

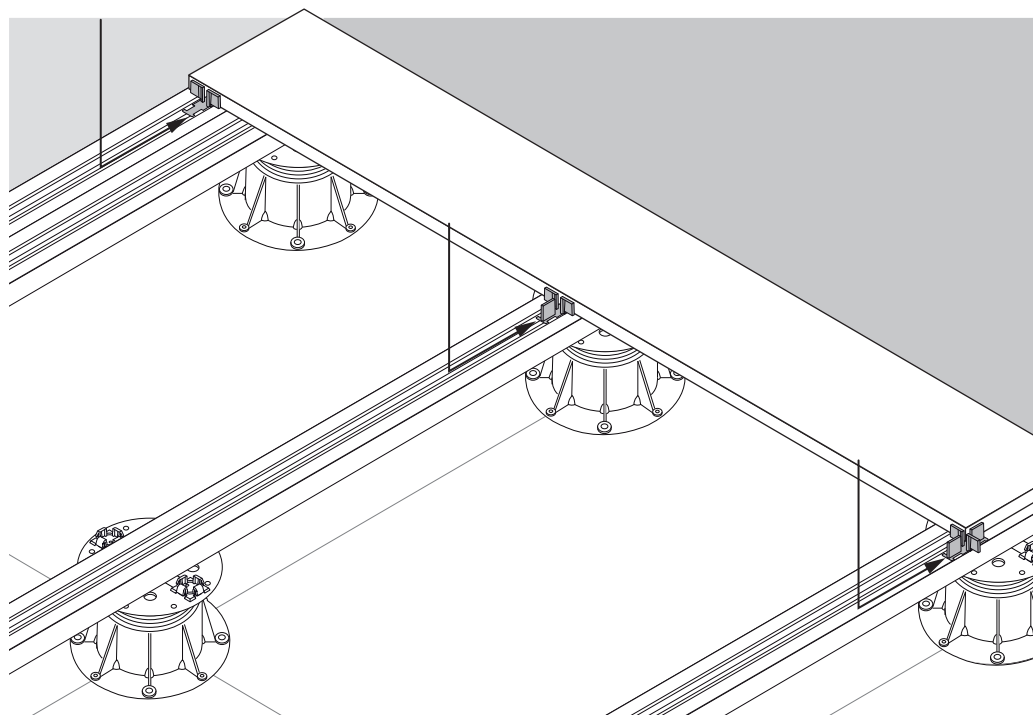
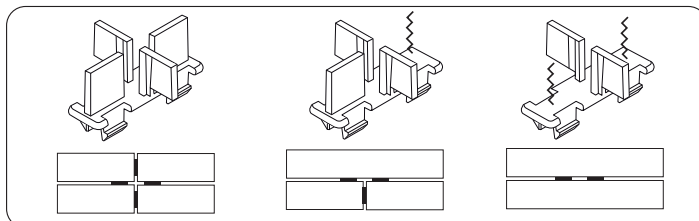
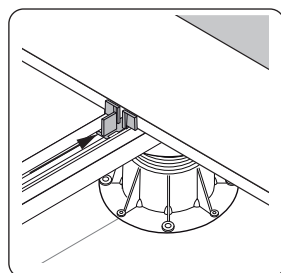
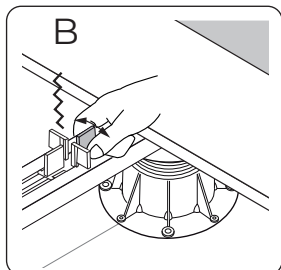
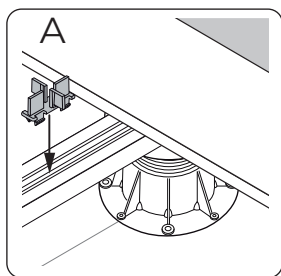
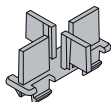


U-BRS-VIS
U-BRS-STOP



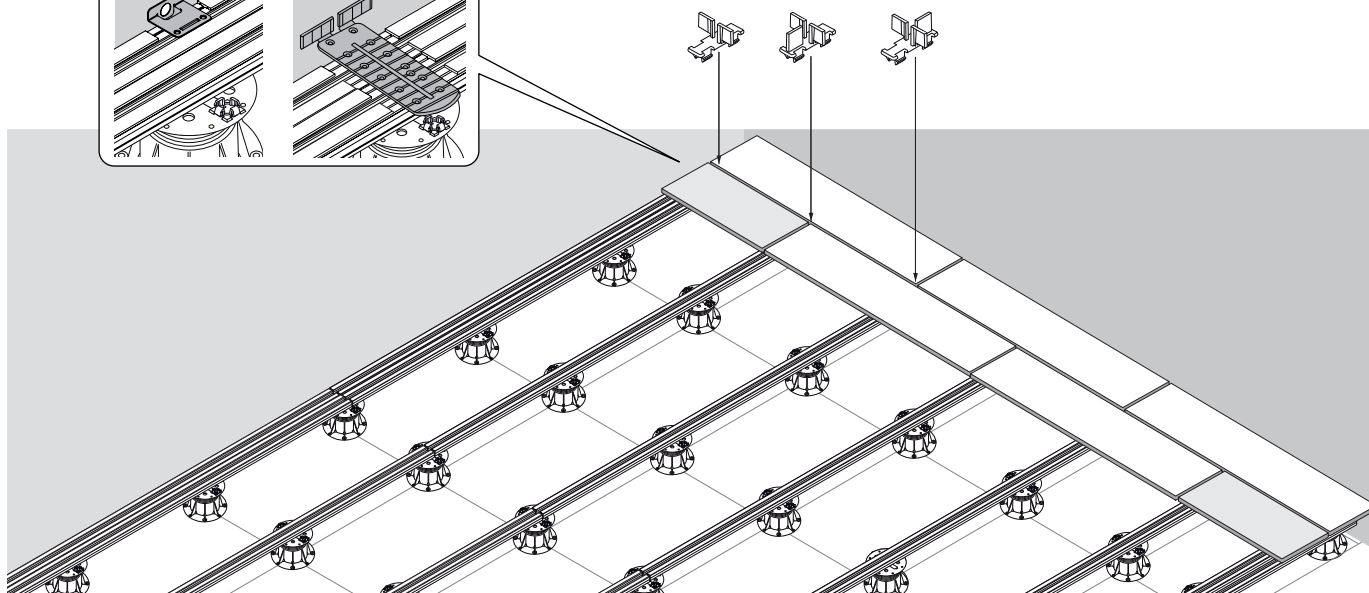
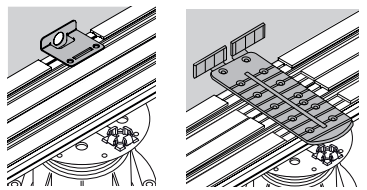
16

U-BRS-TABS

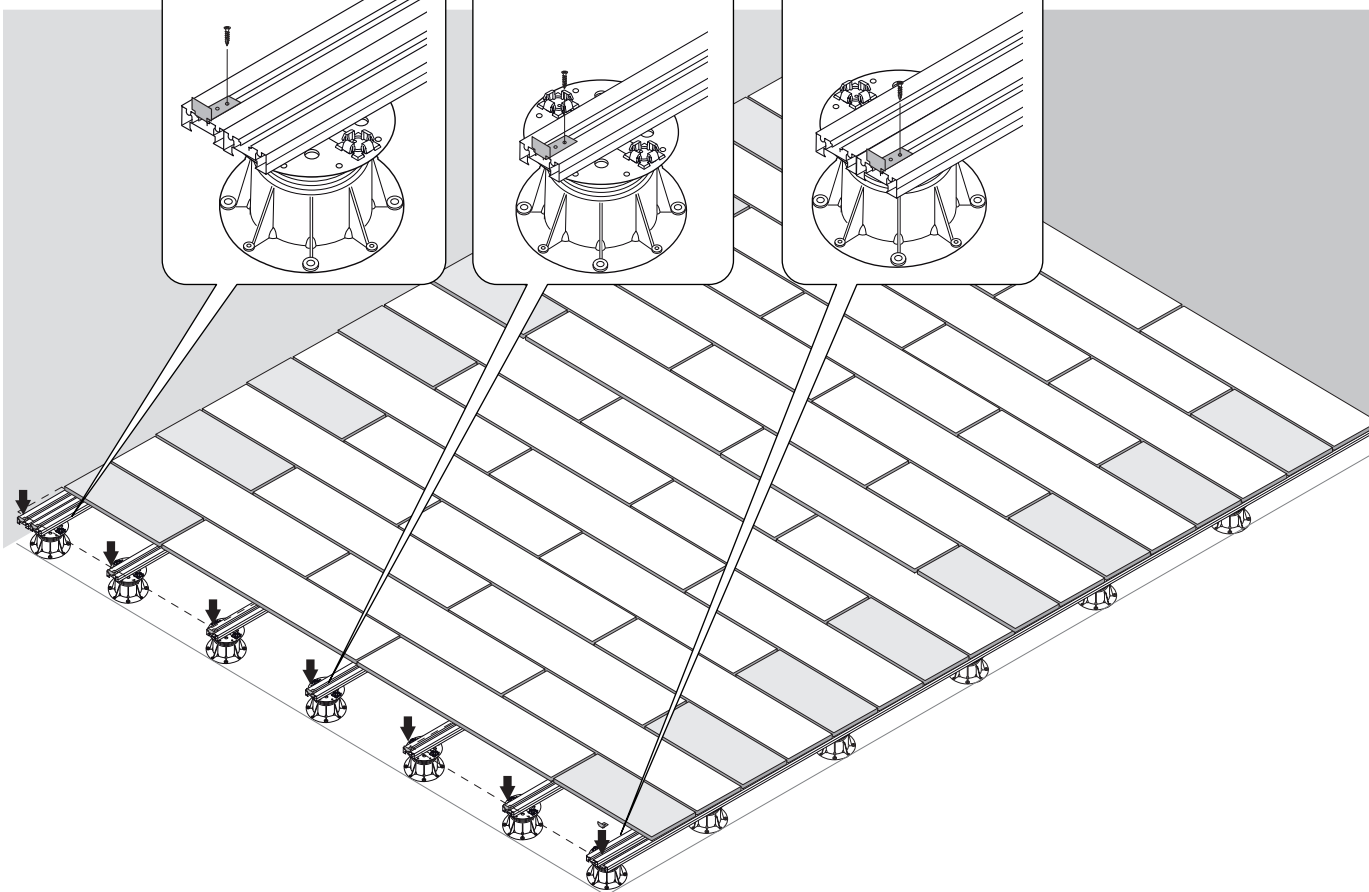
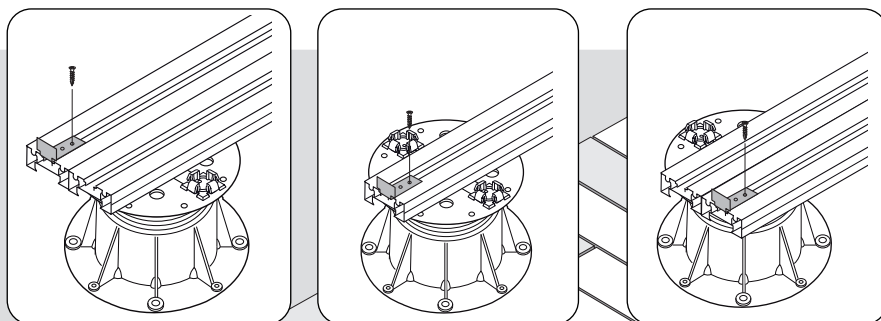


17

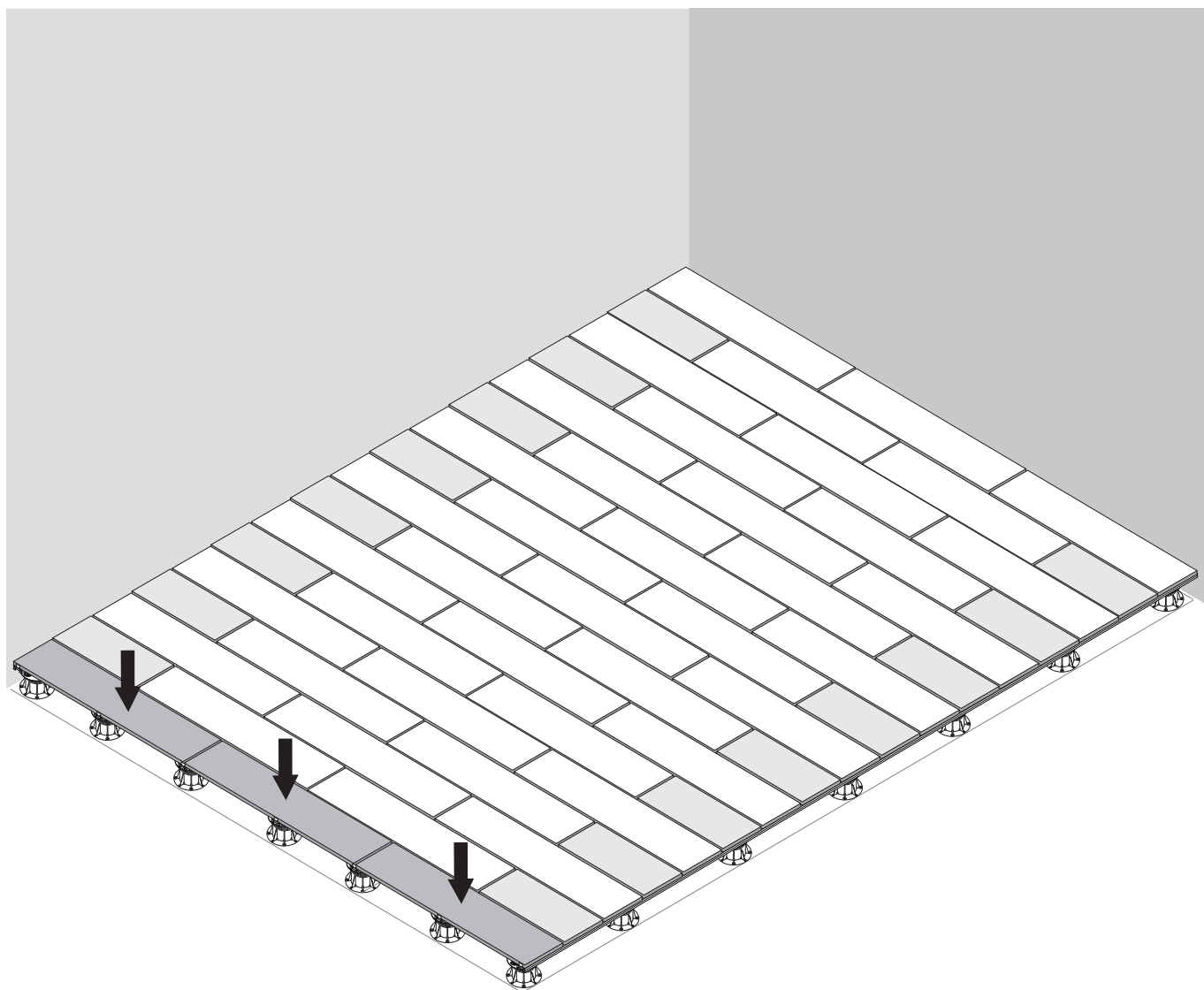
E-BRS-STOP ODER U-WALL

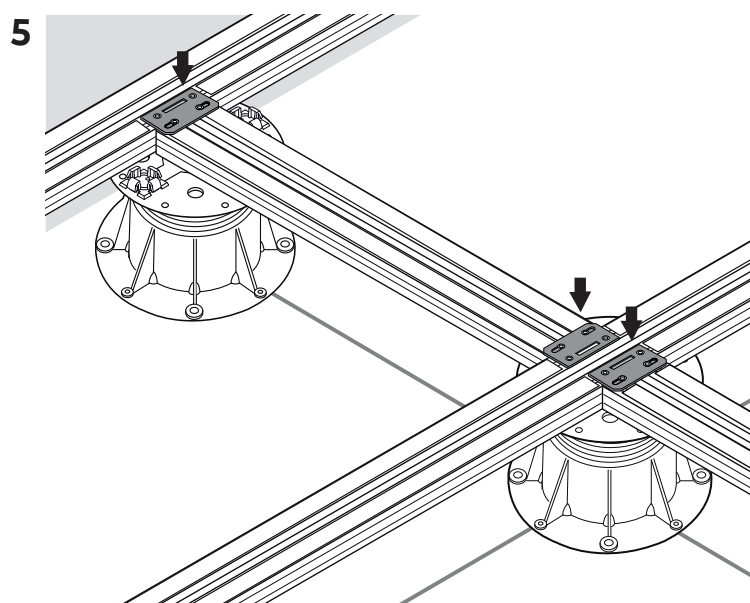
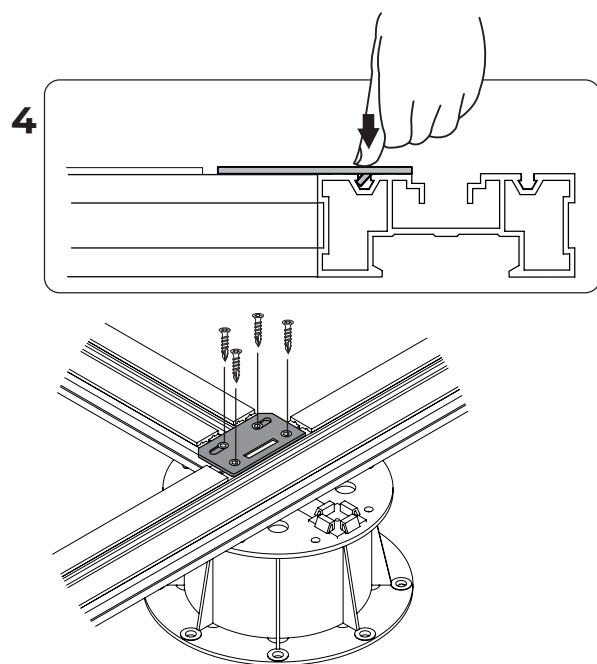
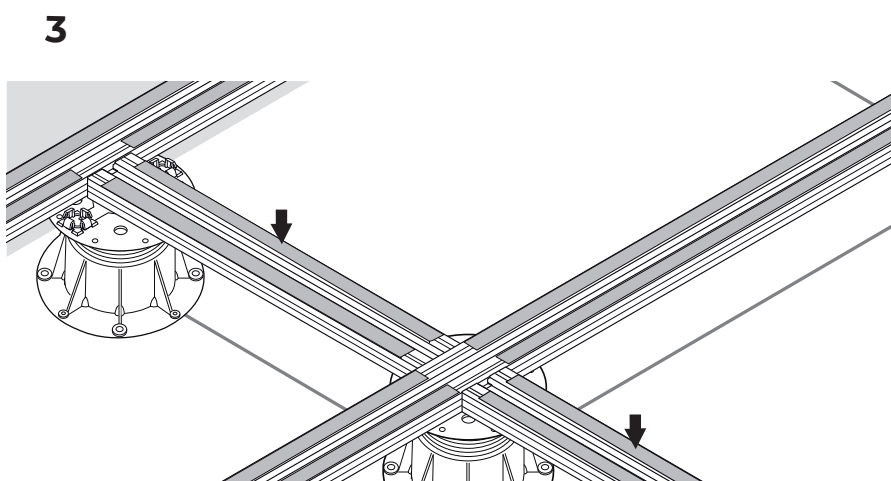
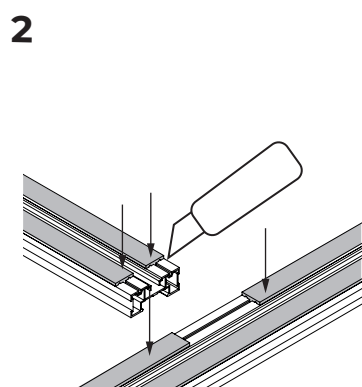
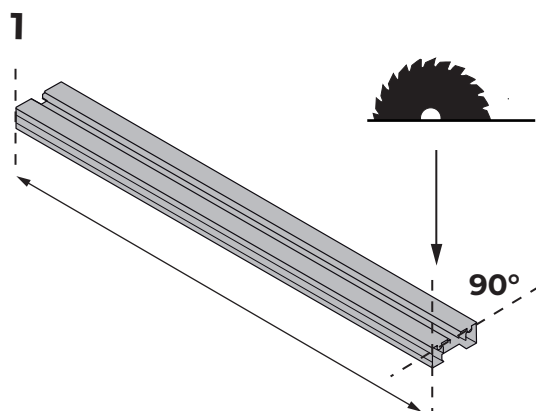
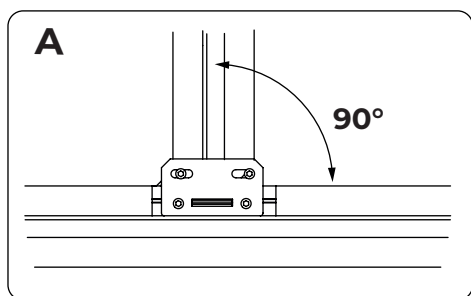
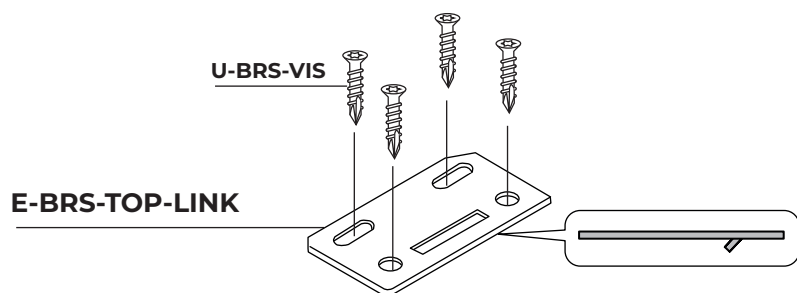


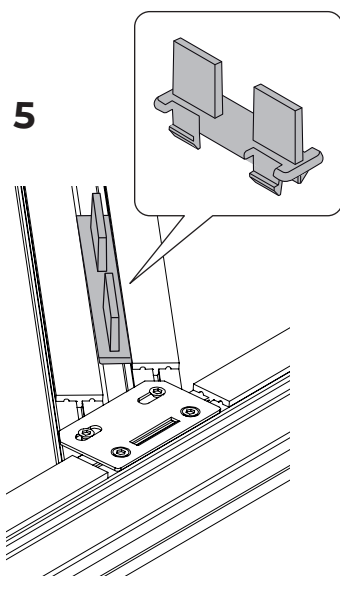
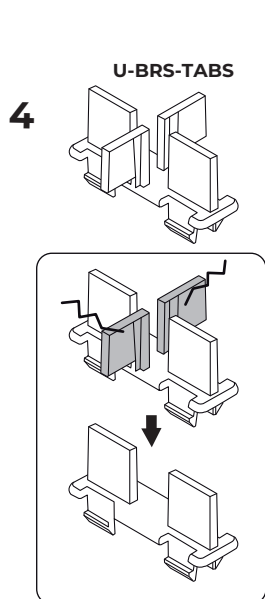
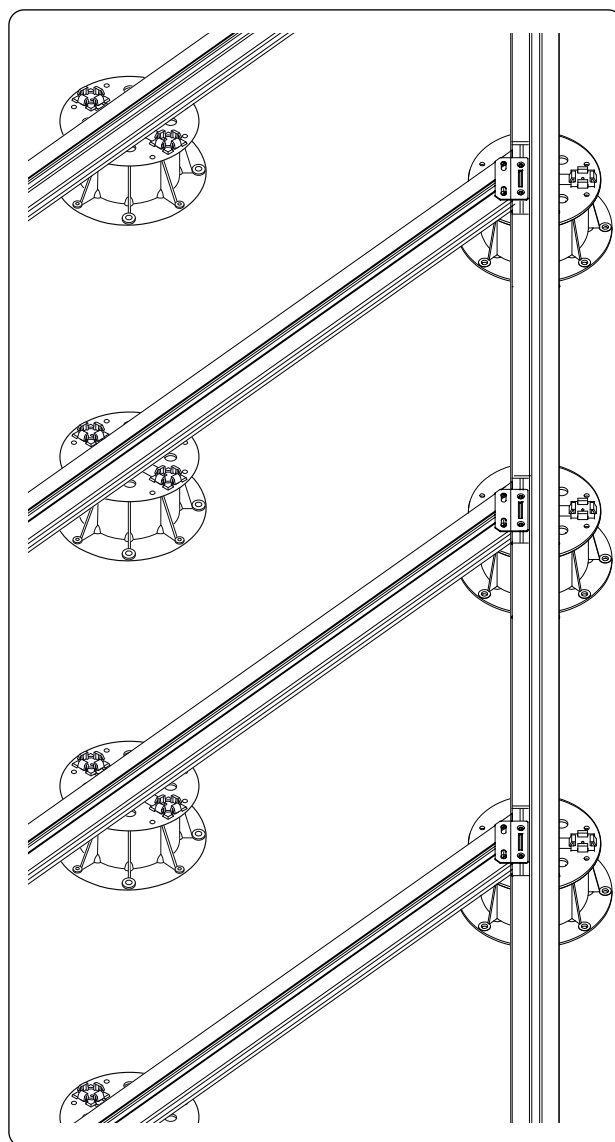
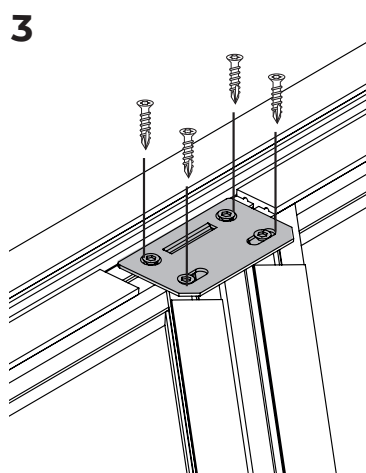
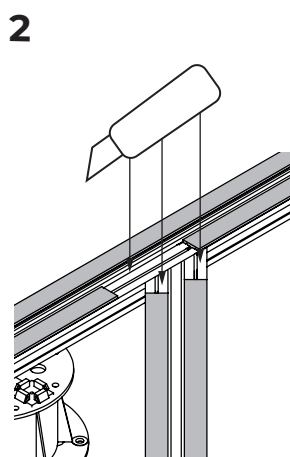
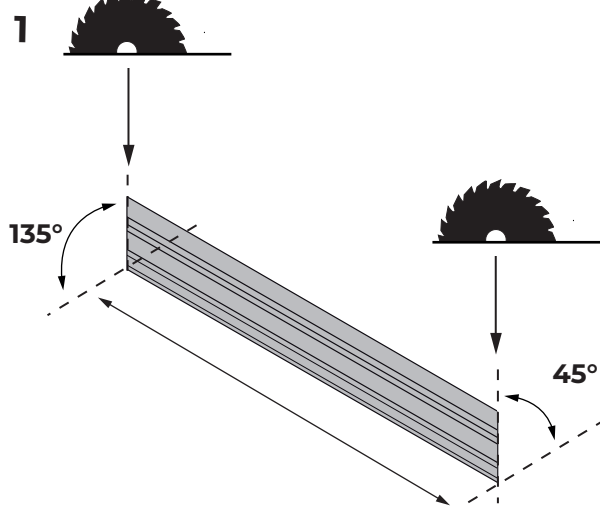
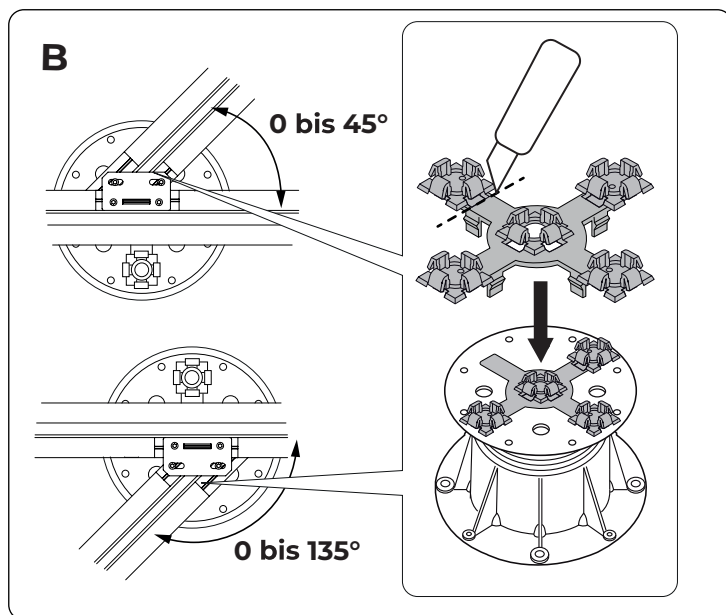
18



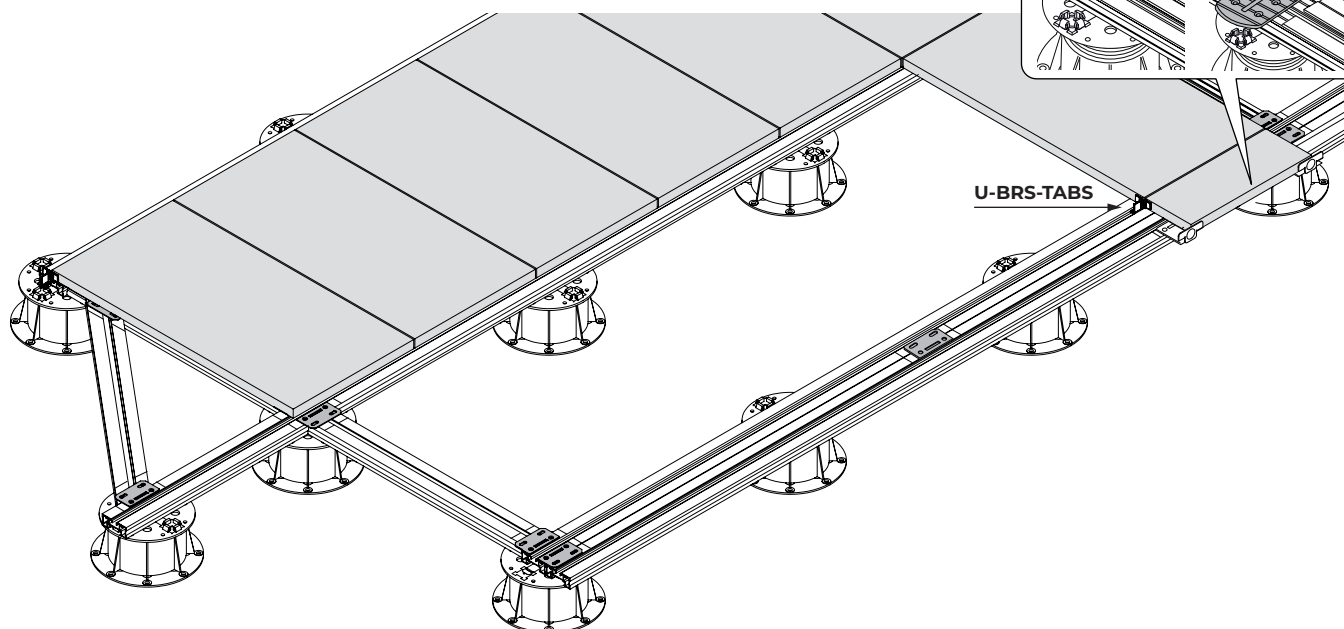
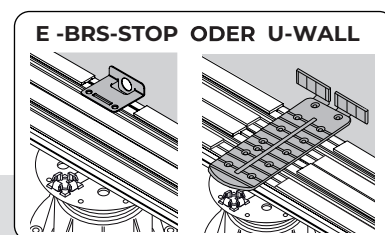
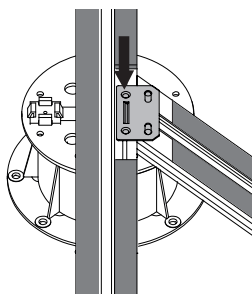
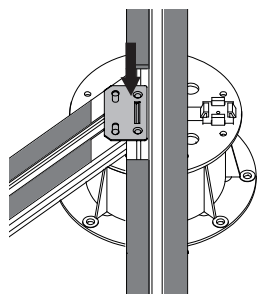
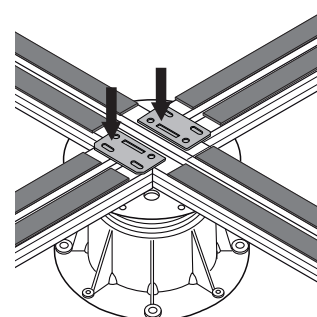
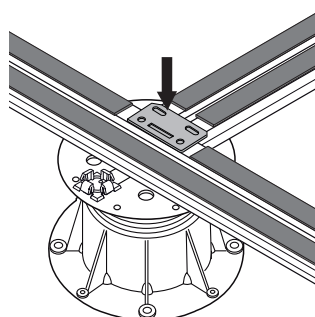
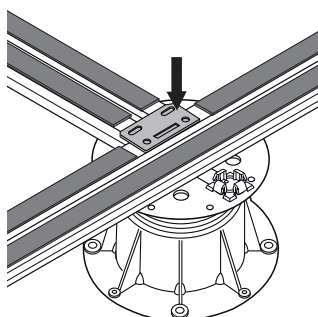
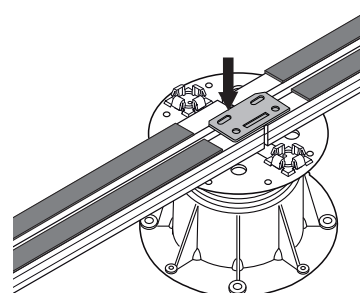
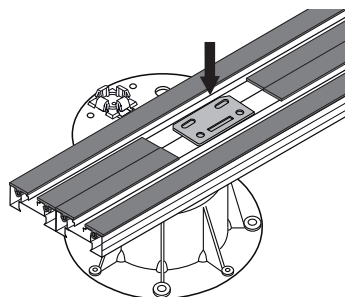
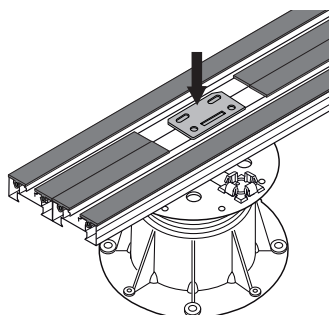
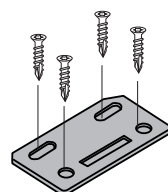
19



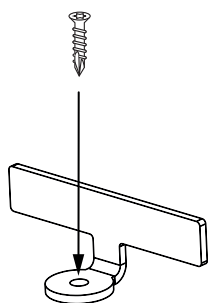




Schienenbefestigung mit E-BRS-TOP-LINK

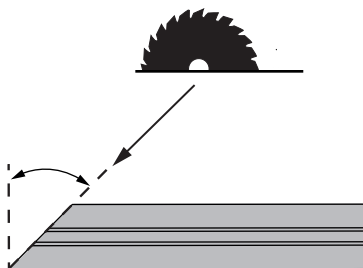


U-BRS-VIS

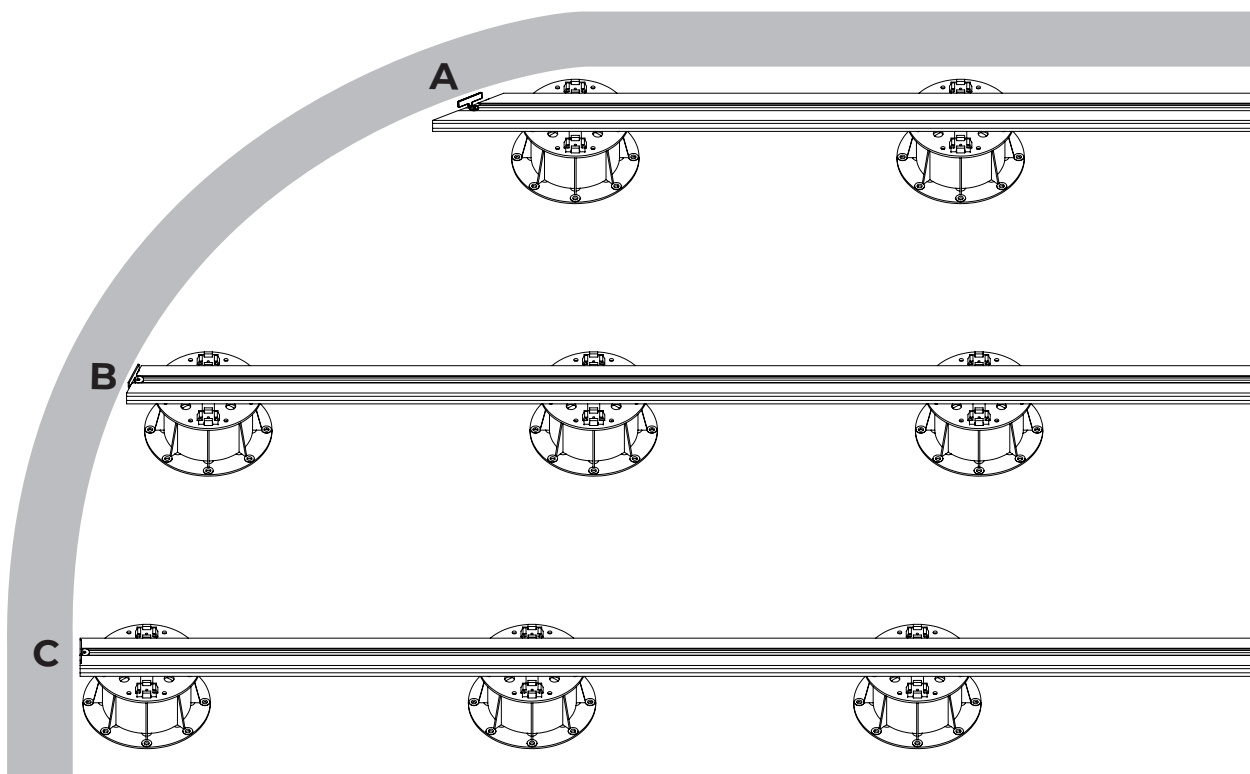
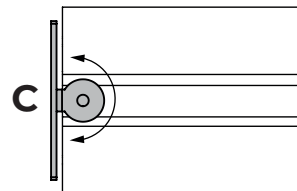
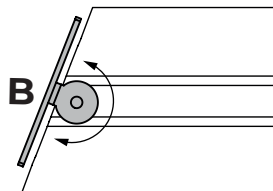
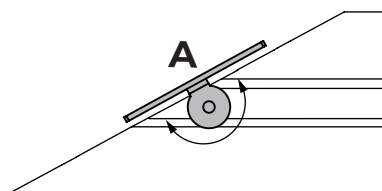
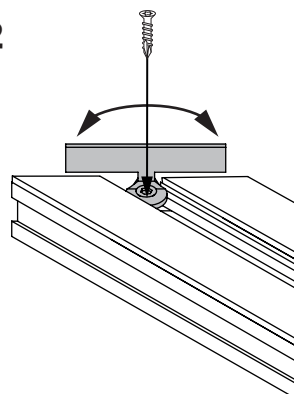


E-BRS-STOP-ROUND

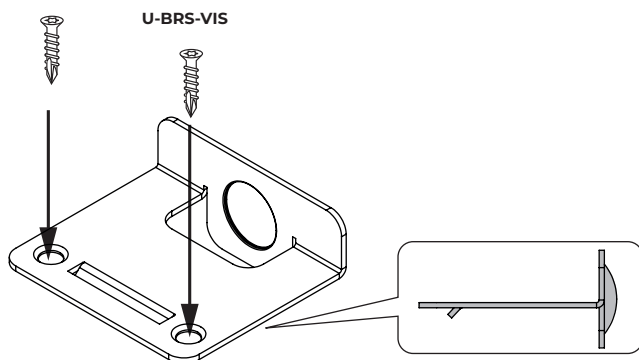
1



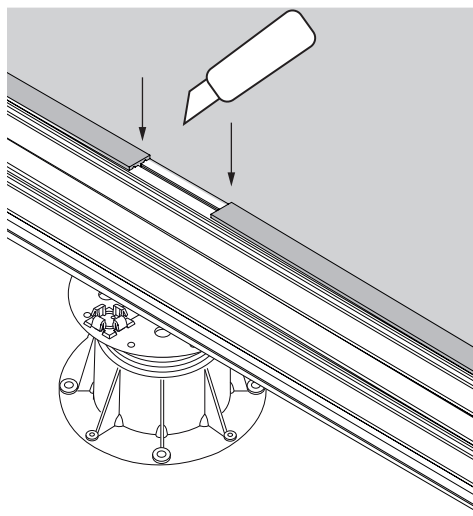
2



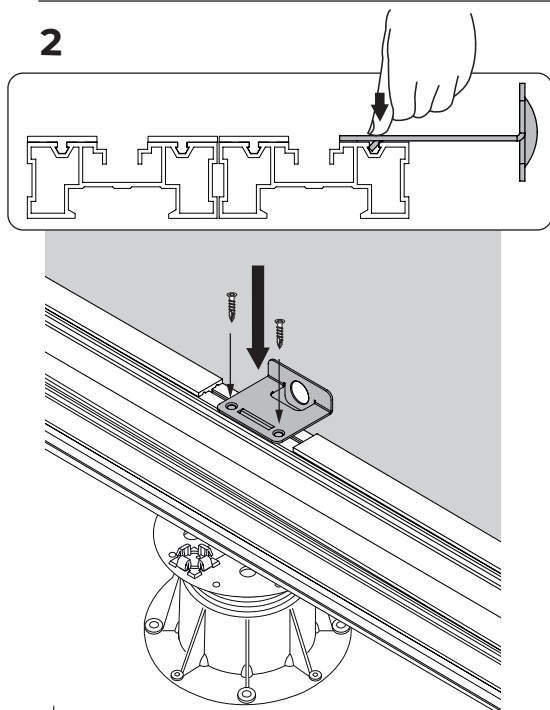
E-BRS-WALL



1

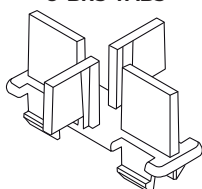


2

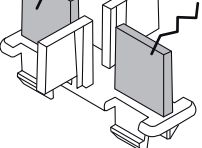


3

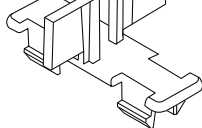
U-BRS-TABS



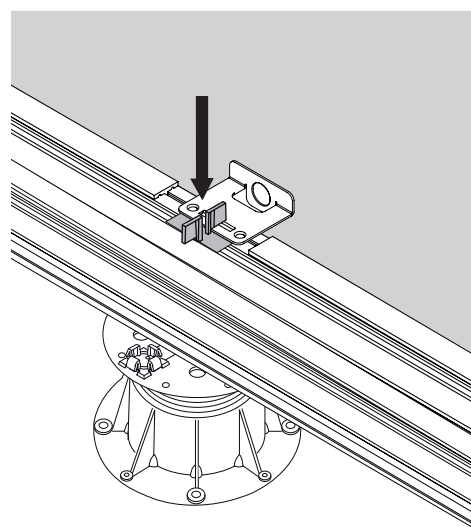
A



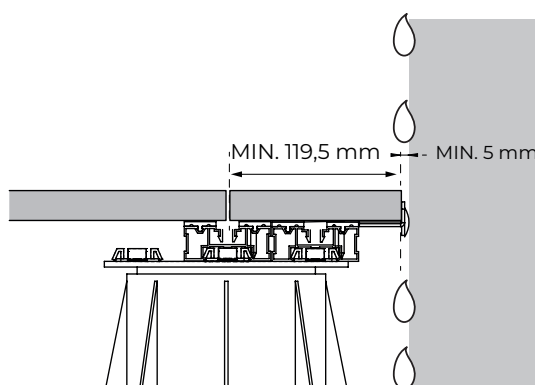
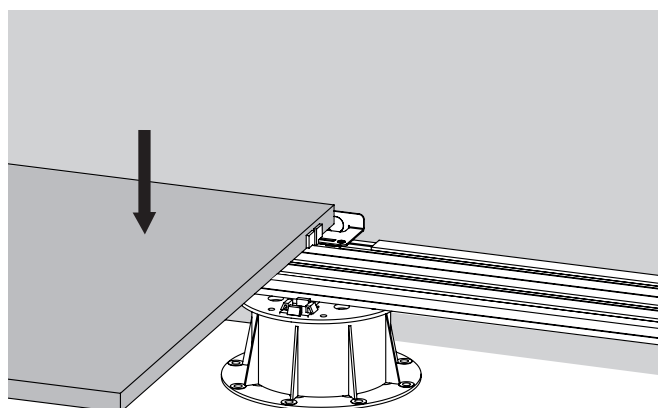
B

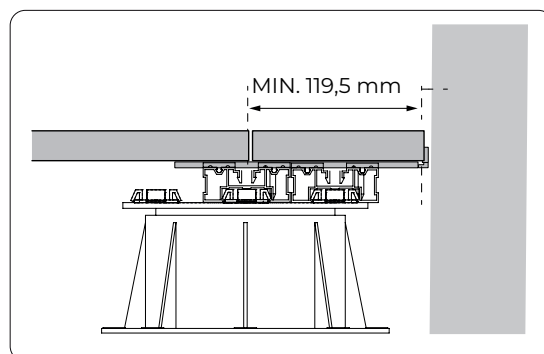
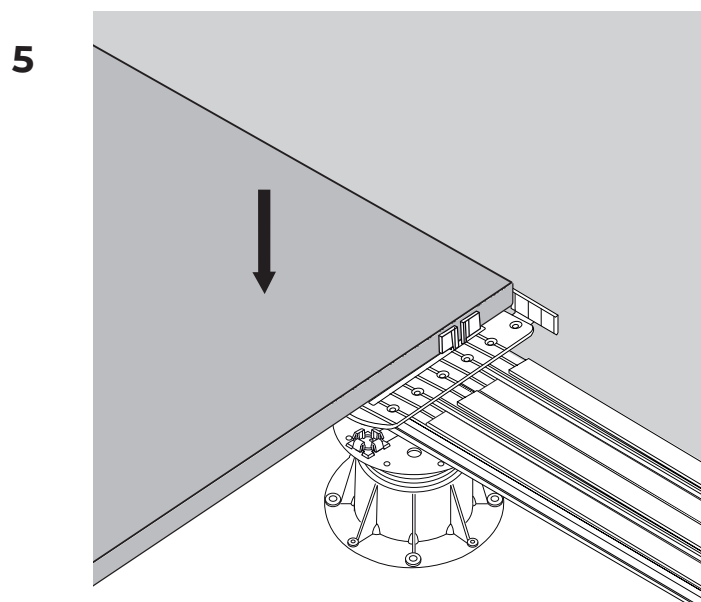
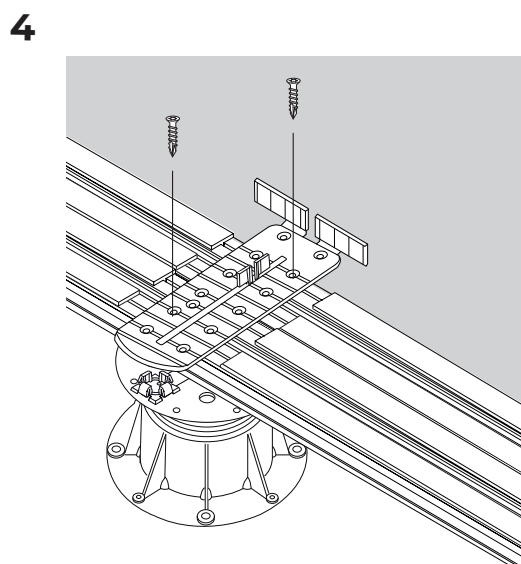
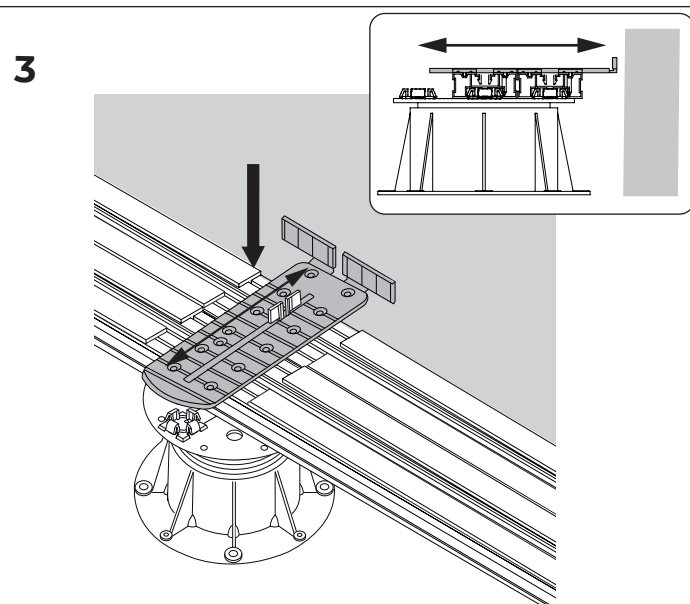
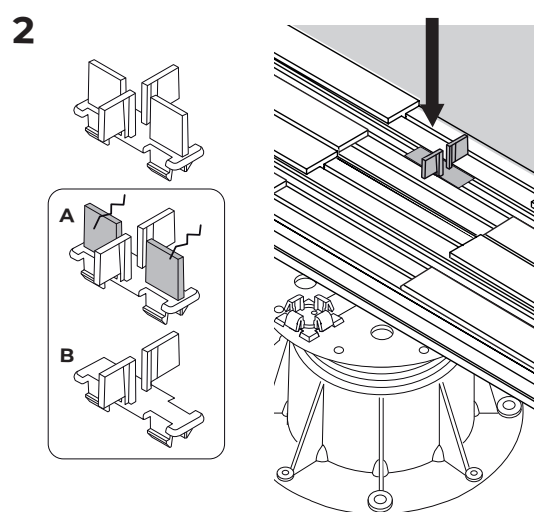
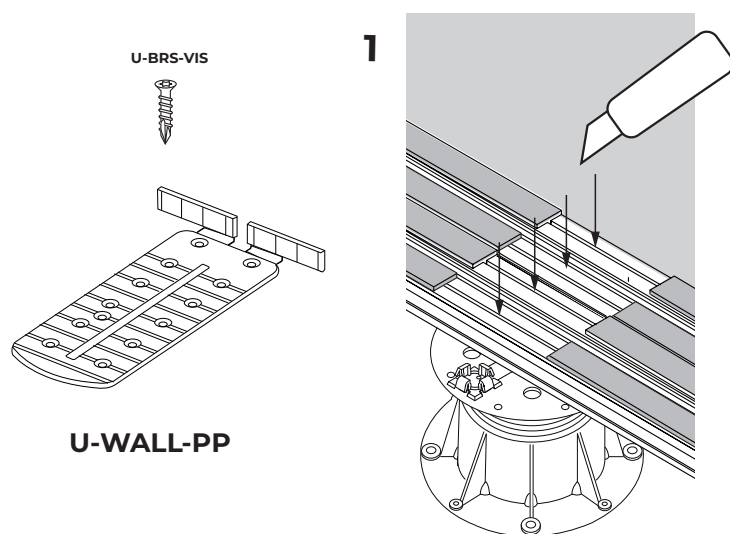


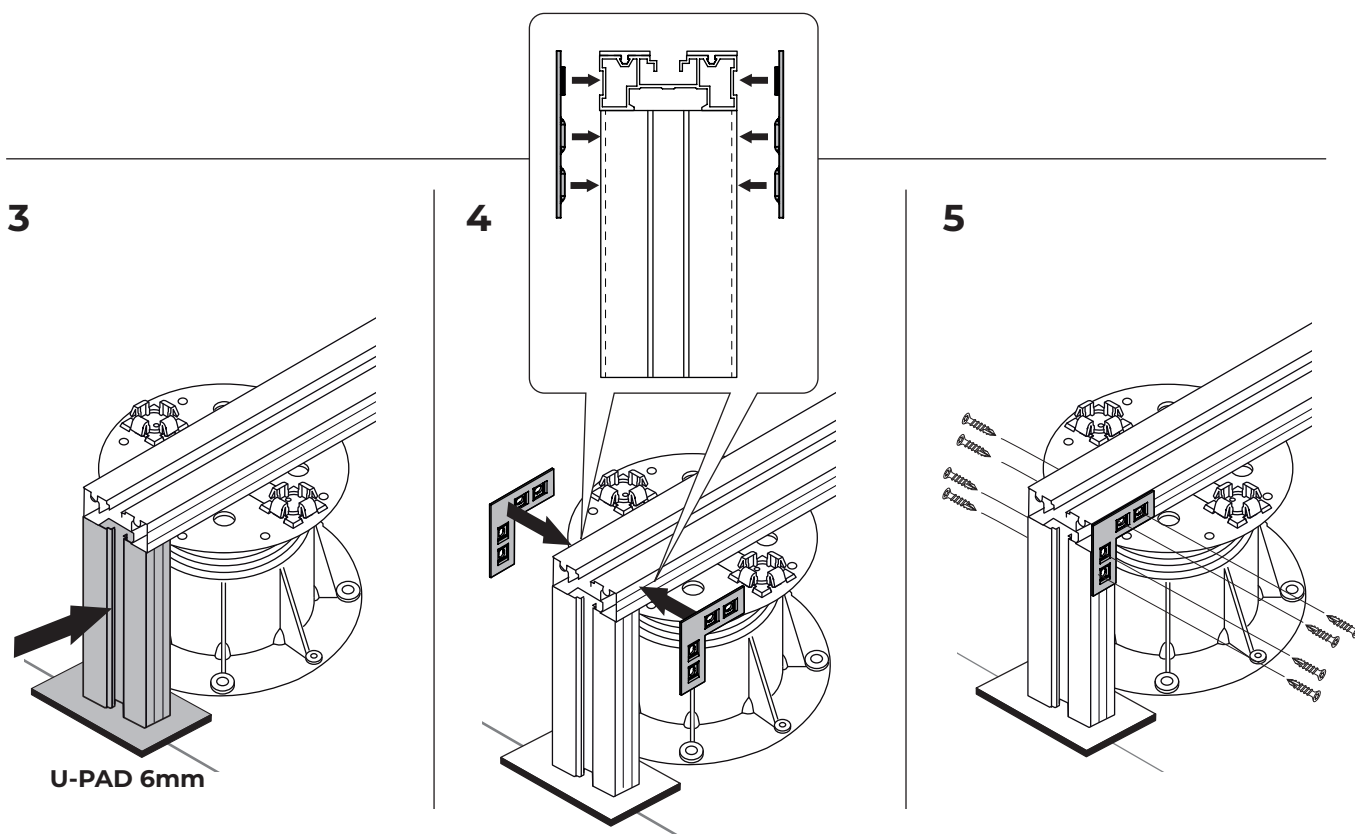
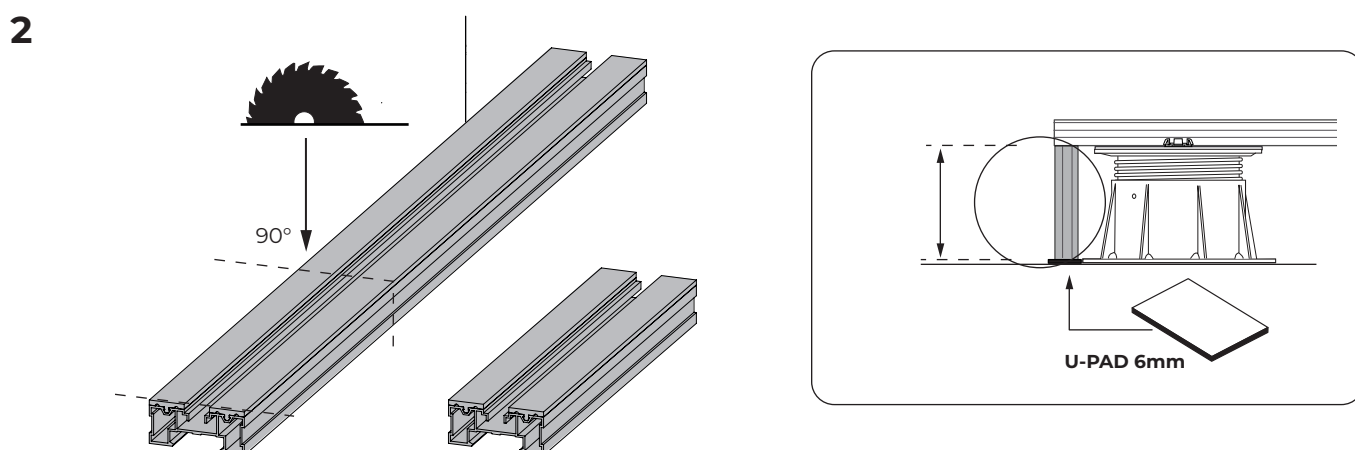
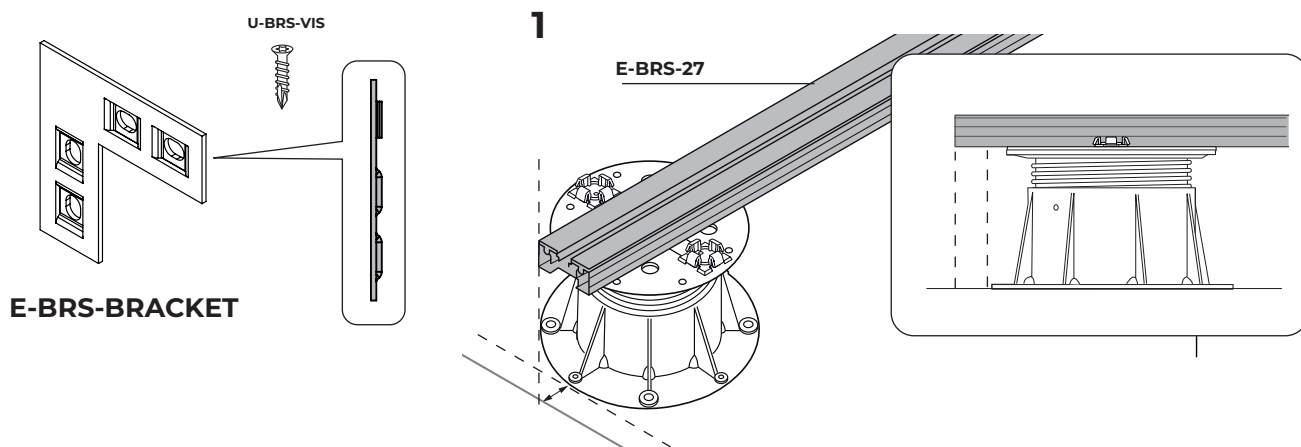
4



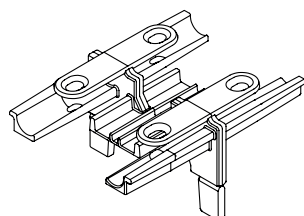
5



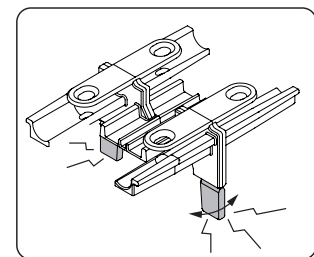




E-BRS-CONNECTION

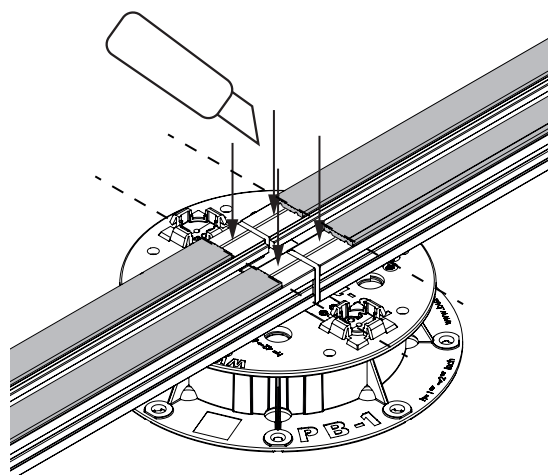


E-BRS-CONNECTION-41

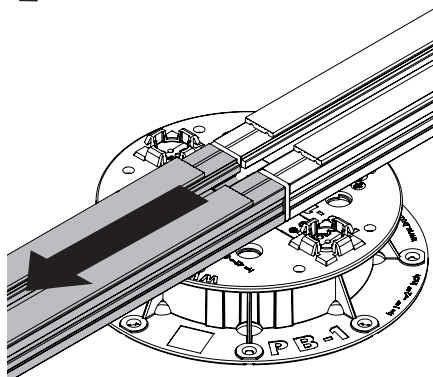


E-BRS-CONNECTION-27

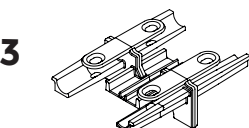
1



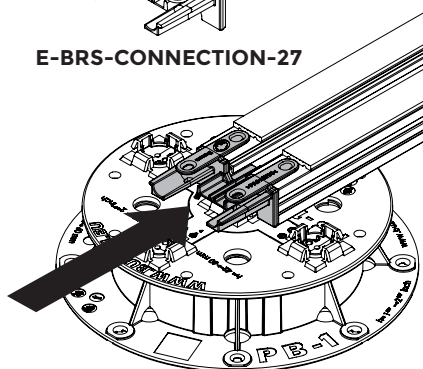
2



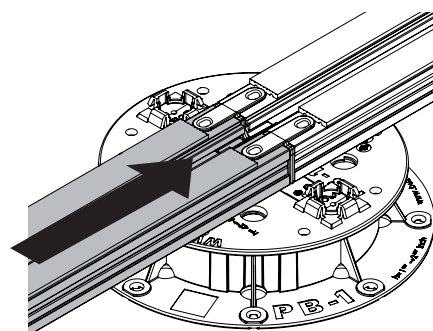
3



E-BRS-CONNECTION-27

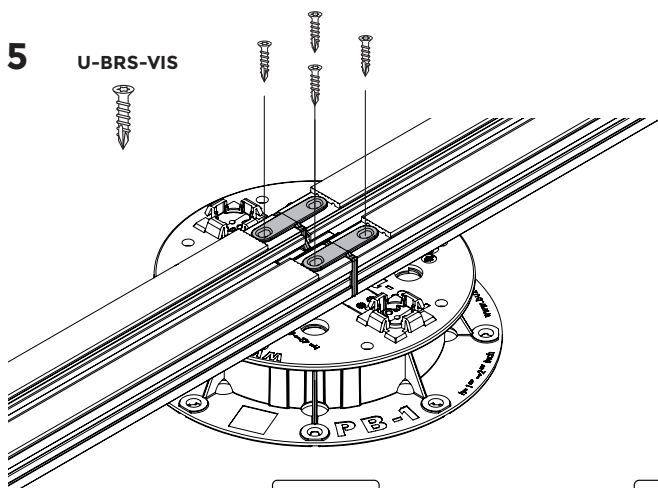


4

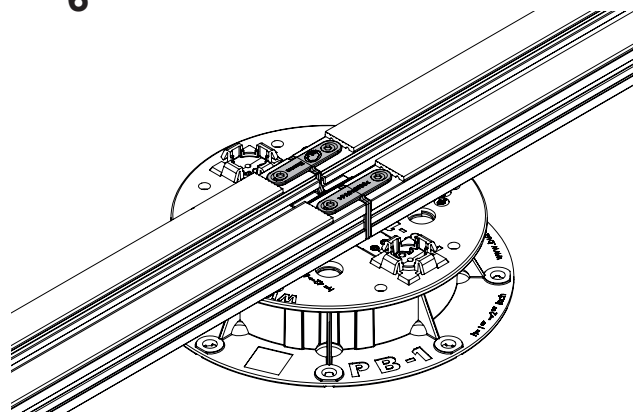


5

U-BRS-VIS



6



OK



OK

